

**2013-2014**

**Tissue-Based**

## IN-VITRO DIAGNOSTICS PRODUCT CATALOG

In Situ Hybridization

Immunohistochemistry

# A History of Delivering Superior Products



Genemed Biotechnologies, Inc. was founded in 1987 and is located in the center of the South San Francisco Biotechnology community. For over 15 years, Genemed has been providing outstanding contract development and manufacturing services for well-established pharmaceutical and diagnostic companies. In 2009, to continue with our tradition of delivering excellent service, we launched our very own product lines to better serve the needs of the Biotechnology community.

At Genemed Biotechnologies, Inc., we incorporate quality from the inside out, from our dedicated employees and efficient operations to our finished products. We are FDA registered and ISO-13485:2003 certified. Every part of our facility, systems, and processes are continuously monitored to ensure that we meet the highest standards of quality and customer satisfaction.

## Mission Statement

- Genemed provides cancer and infectious disease diagnostic reagents for different instruments and technology platforms. We also provide service to our partners to accelerate their IVD product development and commercialization.
- We create smarter and user-friendly diagnostic tools and solutions by applying our expertise in product design and manufacturing processes. Genemed strives to go above and beyond to meet every customer need with our personalized service. We are passionate at applying innovative technology and breakthrough scientific discoveries to improve product quality and reliability which ensure accurate diagnoses and enhanced patient care.
- We pride ourselves in conducting business in a fair and ethical manner. Genemed values our employees by promoting a learning environment with professional growth.



# TABLE OF CONTENTS

## 2 In Situ Hybridization

New Product	2
Probes	3
Detection Kit	5
Ancillary Reagents	5

## 6 Immunohistochemistry

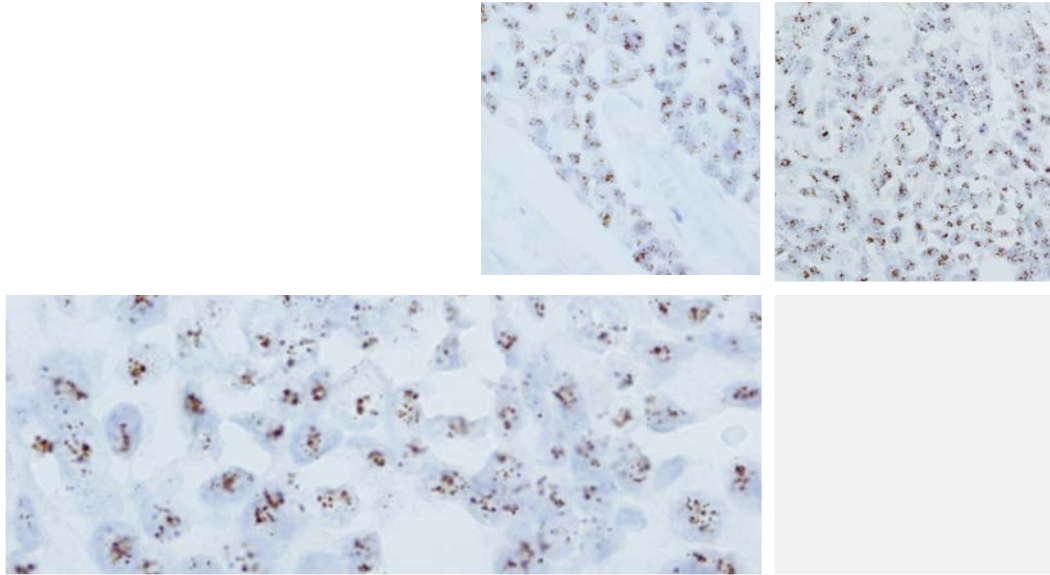
Primary Antibodies	6
Detection Kits	23
Ancillary Reagents	25

## 26 International Distributors

## 28 Index

Product List by Name	28
----------------------	----

## 29 Ordering Information



## HER2 Chromogenic In Situ Hybridization (CISH) Kit

Genemed HER2 CISH Kit is intended to detect HER2 gene amplification in formalin-fixed, paraffin-embedded (FFPE) tissue sections using Chromogenic In Situ Hybridization.

The human gene HER2, or c-erbB-2, and the rat equivalent gene, neu, have been identified as proto-oncogenes sharing homology with the closely related v-erbB oncogene. The HER2 gene is located on chromosome 17 (17q12-21) and encodes a 185 kDa membrane receptor-like protein. HER2 has tyrosine kinase activity and shares homology with, but is distinct from, the epidermal growth factor receptor (known as EGFr, HER1, or c-erbB-1).

Genemed HER2 Probe (Reagent C) is a double-stranded DNA probe that has been labeled with digoxigenin. It is supplied in a liquid format in hybridization buffer. It has been demonstrated to contain the HER2 gene by PCR, and to bind specifically to the HER2 gene locus on chromosome 17q12-21 by metaphase FISH in normal lymphocytes.

**No. of Tests:** 20 (20 µL probe per test)      **Catalog No.:** 80-0001

**Intended Use:** USA RUO, CE IVD

### CISH Advantages:

- |                            |                                |
|----------------------------|--------------------------------|
| a. Bright-field microscopy | c. Quantitative interpretation |
| b. Morphology observable   | d. Archivable results          |



## In Situ Hybridization Probes

Genemed CISH and FISH probes provide a practical method to detect gene aberration, including gene amplification, deletion, chromosome/gene copy number change, chromosome translocation, gene expression at RNA level, and viral/bacterial detection. With CISH, tissue and cell morphology can be evaluated simultaneously with the gene status by using bright-field microscopy and standard immunohistochemistry techniques (conventional peroxidase or alkaline phosphatase reactions). Genemed multiplex FISH allows for simultaneous detection of multiple targets using dual-colored probes.

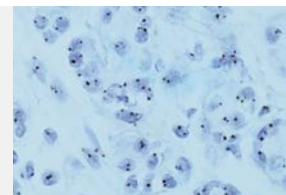
### Chromosome 3 Centromere Digoxigenin Labeled Probe

CISH/FISH CISH

Catalog No. 70-0006

Size 400  $\mu$ L

Intended Use RUO



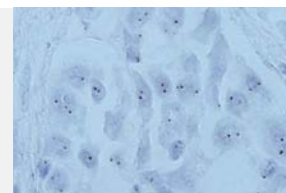
### Chromosome 7 Centromere Digoxigenin Labeled Probe

CISH/FISH CISH

Catalog No. 70-0005

Size 400  $\mu$ L

Intended Use RUO



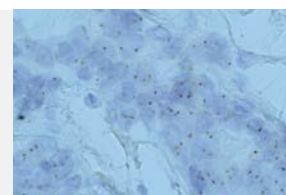
### Chromosome 17 Centromere Digoxigenin Labeled Probe

CISH/FISH CISH

Catalog No. 70-0018

Size 400  $\mu$ L

Intended Use RUO



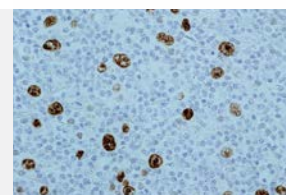
### EBER Digoxigenin Labeled Probe

CISH/FISH CISH

Catalog No. 70-0022

Size 400  $\mu$ L

Intended Use RUO



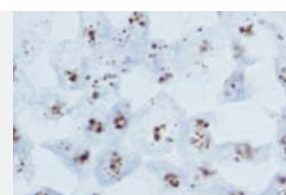
### HER2 Digoxigenin Labeled Probe

CISH/FISH CISH

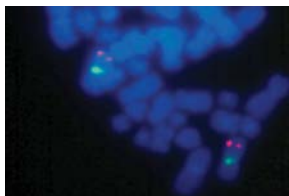
Catalog No. 70-0011

Size 400  $\mu$ L

Intended Use USA RUO, CE IVD



**Chromosome 3 Centromere Green FISH Probe**



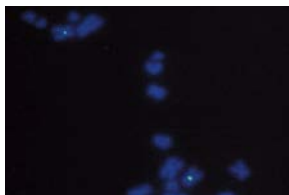
CISH/FISH FISH

Catalog No. 70-0007

Size 100 µL

Intended Use RUO

**Chromosome 7 Centromere Green FISH Probe**



CISH/FISH FISH

Catalog No. 70-0010

Size 100 µL

Intended Use RUO

**Chromosome 17 Centromere Green FISH Probe**

CISH/FISH FISH

Catalog No. 70-0019

Size 100 µL

Intended Use RUO

**HER2 Red and Chromosome 17 Centromere Green FISH Probe Cocktail**

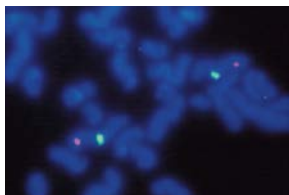
CISH/FISH FISH

Catalog No. 70-0012

Size 100 µL

Intended Use RUO

**TERC Red and Chromosome 3 Centromere Green FISH Probe Cocktail**



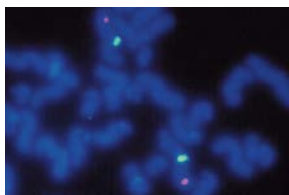
CISH/FISH FISH

Catalog No. 70-0009

Size 100 µL

Intended Use RUO

**TERC Red FISH Probe**



CISH/FISH FISH

Catalog No. 70-0008

Size 100 µL

Intended Use RUO

## In Situ Hybridization Poly Detection Kit

Genemed offers highly-sensitive polymer HRP detection systems for CISH applications. Genemed's sensitive and easy-to-use detection systems enable strong staining signals with lowest possible background.

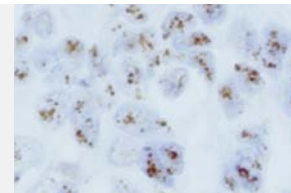
### CISH Poly HRP Detection Kit for DIG Labeled Probes

**Kit Includes** Poly HRP Conjugate

**Catalog No.** 52-0025

**Size** 20 tests (200µL per test)

**Intended Use** RUO



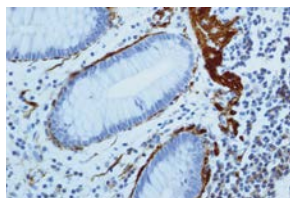
**Description** Genemed's Poly HRP Detection Kit will detect digoxigenin-labeled probes. The kit uses an HRP/DAB detection system to localize digoxigenin-labeled probes. The DAB is used to create a permanent, intense brown deposit in the location of the antigen/antibody/enzyme complex in the sample. The staining location and pattern is easily observable by light microscopy.

## In Situ Hybridization Ancillary Reagents

Description	Catalog No.	Size	Intended Use
SSC Buffer (20X)	10-0029	100 mL	RUO
CISH Tissue Pretreatment Kit	10-0173	10mL/1000mL	RUO
CISH Cell Pretreatment Kit	10-0174	50 mL	RUO

# Immunohistochemistry Primary Antibodies

## Actin (Muscle)



**Clone** HHF35

**Catalog No.** 61-0002, 61-0002-5, 61-0002-2 / 60-0002-7

**Isotype** IgG1

**Intended Use** USA IVD, CE IVD

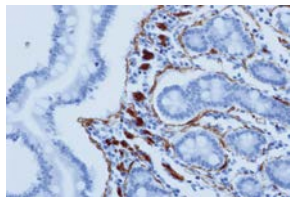
**Host** Mouse

**Size** Concentrate 1 mL, 0.5 mL, 0.2 mL / RTU 7 mL

**Staining Pattern** Cytoplasm

**Positive Control Tissue** Gastric Intestinal Tract

## Actin (Smooth Muscle)



**Clone** 1A4

**Catalog No.** 61-0001, 61-0001-5, 61-0001-2 / 60-0001-7

**Isotype** IgG2a

**Intended Use** USA IVD, CE IVD

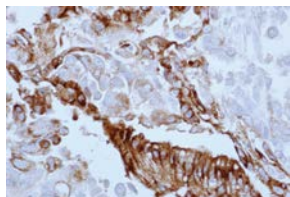
**Host** Mouse

**Size** Concentrate 1 mL, 0.5 mL, 0.2 mL / RTU 7 mL

**Staining Pattern** Cytoplasm

**Positive Control Tissue** Gastrointestinal Tract

## AFP



**Clone** Poly

**Catalog No.** 61-0088-2 / 60-0088-7

**Isotype** N/A

**Intended Use** USA IVD, CE IVD

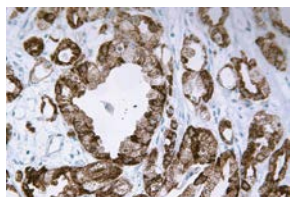
**Host** Rabbit

**Size** Concentrate 0.2 mL / RTU 7 mL

**Staining Pattern** Cytoplasm

**Positive Control Tissue** Hepatocellular Carcinoma

## AMACR



**Clone** 13H4

**Catalog No.** 61-0096, 61-0096-5, 61-0096-2 / 60-0096-7

**Isotype** N/A

**Intended Use** USA IVD, CE IVD

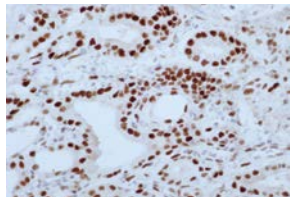
**Host** Rabbit

**Size** Concentrate 1 mL, 0.5 mL, 0.2 mL / RTU 7 mL

**Staining Pattern** Cytoplasm

**Positive Control Tissue** Prostate Cancer

## Androgen Receptor



**Clone** GM014

**Catalog No.** 61-0087, 61-0087-5, 61-0087-2 / 60-0087-7

**Isotype** IgG1

**Intended Use** USA IVD, CE IVD

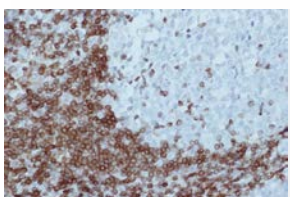
**Host** Mouse

**Size** Concentrate 1 mL, 0.5 mL, 0.2 mL / RTU 7 mL

**Staining Pattern** Nucleus

**Positive Control Tissue** Prostate

## Bcl-2



**Clone** Bcl-2-100

**Catalog No.** 61-0005, 61-0005-5, 61-0005-2 / 60-0005-7

**Isotype** IgG1

**Intended Use** USA IVD, CE IVD

**Host** Mouse

**Size** Concentrate 1 mL, 0.5 mL, 0.2 mL / RTU 7 mL

**Staining Pattern** Cytoplasm

**Positive Control Tissue** Tonsil



Genemed offers primary antibodies with high affinity and specificity for in vitro diagnostic and research use. Our primary antibodies are optimized and titrated for immunohistochemistry (IHC) testing using human formalin-fixed, paraffin-embedded (FFPE) tissue sections along with Genemed IHC Detection Systems and Ancillary reagents.

## Calponin

**Clone** CALP

**Host** Mouse

**Catalog No.** 61-0105-2 / 60-0105-7

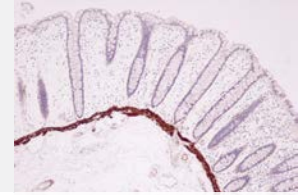
**Isotype** IgG1

**Intended Use** USA IVD, CE IVD

**Size** Concentrate 0.2 mL / RTU 7 mL

**Staining Pattern** Cytoplasm

**Positive Control Tissue** Appendix, breast, leiomyoma, uterus



## Calretinin

**Clone** Poly

**Host** Rabbit

**Catalog No.** 61-0006, 61-0006-5, 61-0006-2 / 60-0006-7

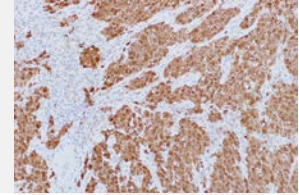
**Isotype** N/A

**Intended Use** USA IVD, CE IVD

**Size** Concentrate 1 mL, 0.5 mL, 0.2 mL / RTU 7 mL

**Staining Pattern** Cytoplasm and Nucleus

**Positive Control Tissue** Mesothelioma



## Calretinin

**Clone** Z11-E3

**Host** Mouse

**Catalog No.** 60-0073-7

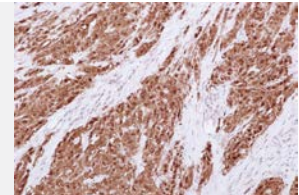
**Isotype** IgG2b

**Intended Use** RUO

**Size** RTU 7 mL

**Staining Pattern** Nucleus and Cytoplasm

**Positive Control Tissue** Mesothelioma



## CD1a

**Clone** 010

**Host** Mouse

**Catalog No.** 61-0143, 61-0143-5, 61-0143-2 / 60-0143-7

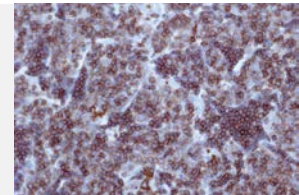
**Isotype** IgG1

**Intended Use** USA IVD, CE IVD

**Size** Concentrate 1 mL, 0.5 mL, 0.2 mL / RTU 7 mL

**Staining Pattern** Membrane and some Cytoplasm

**Positive Control Tissue** Thymus and Skin



## CD10

**Clone** GM003

**Host** Mouse

**Catalog No.** 61-0008, 61-0008-5, 61-0008-2 / 60-0008-7

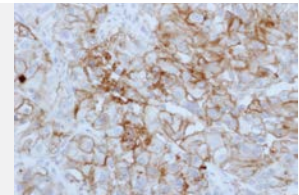
**Isotype** IgG2b

**Intended Use** USA IVD, CE IVD

**Size** Concentrate 1 mL, 0.5 mL, 0.2 mL / RTU 7 mL

**Staining Pattern** Membrane

**Positive Control Tissue** Follicular lymphoma, diffuse large B-cell lymphoma



## CD138

**Clone** MI15

**Host** Mouse

**Catalog No.** 61-0108-2 / 60-0108-7

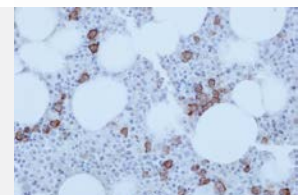
**Isotype** IgG1

**Intended Use** USA IVD, CE IVD

**Size** Concentrate 0.2 mL / RTU 7 mL

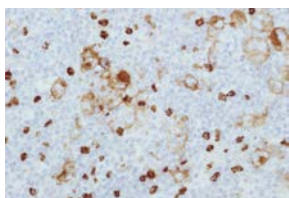
**Staining Pattern** Membrane

**Positive Control Tissue** Myeloma, esophagus



# IHC - Primary Antibodies

## CD15



**Clone** Carb-3

**Catalog No.** 61-0119-2 / 60-0119-7

**Isotype** IgM

**Intended Use** USA IVD, CE IVD

**Host** Mouse

**Size** Concentrate 0.2 mL / RTU 7 mL

**Staining Pattern** Cytoplasm and membrane

**Positive Control Tissue** Tonsil, Hodgkin's disease

## CD19

**Clone** LE-CD19

**Catalog No.** 61-0116-2 / 60-0116-7

**Isotype** IgG1

**Intended Use** USA IVD, CE IVD

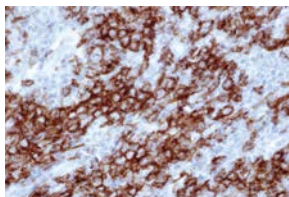
**Host** Mouse

**Size** Concentrate 0.2 mL / RTU 7 mL

**Staining Pattern** Membrane

**Positive Control Tissue** Tonsil

## CD19



**Clone** GR014

**Catalog No.** 61-0164, 61-0164-5, 61-0164-2 / 60-0164-7

**Isotype** N/A

**Intended Use** USA IVD, CE IVD

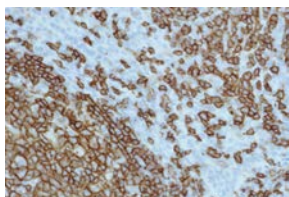
**Host** Rabbit

**Size** Concentrate 1 mL, 0.5 mL, 0.2 mL / RTU 7 mL

**Staining Pattern** Membrane

**Positive Control Tissue** Tonsil

## CD20 B Cell



**Clone** L26

**Catalog No.** 61-0010, 61-0010-5, 61-0010-2 / 60-0010-7

**Isotype** IgG2a

**Intended Use** USA IVD, CE IVD

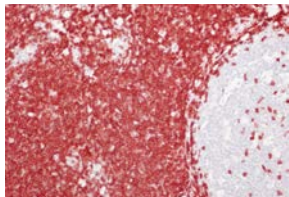
**Host** Mouse

**Size** Concentrate 1 mL, 0.5 mL, 0.2 mL / RTU 7 mL

**Staining Pattern** Membrane

**Positive Control Tissue** Tonsil

## CD3



**Clone** Poly

**Catalog No.** 61-0011, 61-0011-5, 61-0011-2 / 60-0011-7

**Isotype** N/A

**Intended Use** USA IVD, CE IVD

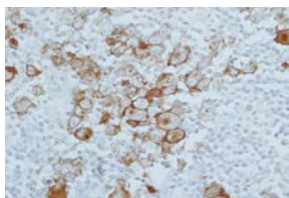
**Host** Rabbit

**Size** Concentrate 1 mL, 0.5 mL, 0.2 mL / RTU 7 mL

**Staining Pattern** Membrane and Cytoplasm

**Positive Control Tissue** Tonsil

## CD30



**Clone** Ber-H2

**Catalog No.** 61-0007, 61-0007-5, 61-0007-2 / 60-0007-7

**Isotype** IgG1

**Intended Use** USA IVD, CE IVD

**Host** Mouse

**Size** Concentrate 1 mL, 0.5 mL, 0.2 mL / RTU 7 mL

**Staining Pattern** Membrane and Cytoplasm

**Positive Control Tissue** Hodgkin Disease

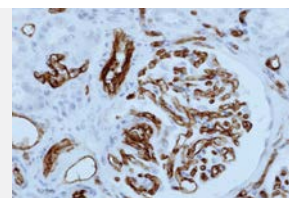
## CD31 (PECAM-1)

**Clone** GM006

**Catalog No.** 61-0072, 61-0072-5, 61-0072-2 / 60-0072-7  
**Isotype** IgG1  
**Intended Use** USA IVD, CE IVD

**Host** Mouse

**Size** Concentrate 1 mL, 0.5 mL, 0.2 mL / RTU 7 mL  
**Staining Pattern** Membrane  
**Positive Control Tissue** Tonsil



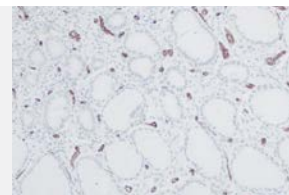
## CD34

**Clone** QBend10

**Catalog No.** 61-0012, 61-0012-5, 61-0012-2 / 60-0012-7  
**Isotype** IgG1  
**Intended Use** USA IVD, CE IVD

**Host** Mouse

**Size** Concentrate 1 mL, 0.5 mL, 0.2 mL / RTU 7 mL  
**Staining Pattern** Membrane  
**Positive Control Tissue** GIST



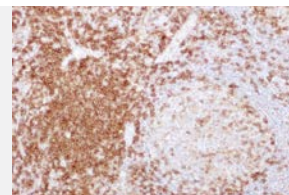
## CD4

**Clone** 4B12

**Catalog No.** 61-0126-2 / 60-0126-7  
**Isotype** IgG1  
**Intended Use** USA IVD, CE IVD

**Host** Mouse

**Size** Concentrate 0.2 mL / RTU 7 mL  
**Staining Pattern** Membrane  
**Positive Control Tissue** Tonsil



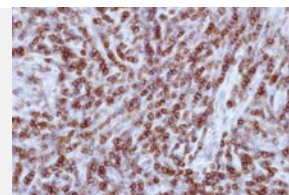
## CD45 (LCA)

**Clone** 2B11 + PD7/26

**Catalog No.** 61-0148-2 / 60-0148-7  
**Isotype** IgG1  
**Intended Use** USA IVD, CE IVD

**Host** Mouse

**Size** Concentrate 0.2 mL / RTU 7 mL  
**Staining Pattern** Membrane  
**Positive Control Tissue** Tonsil



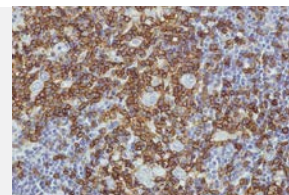
## CD45RO

**Clone** UCHL-1

**Catalog No.** 61-0013, 61-0013-5, 61-0013-2 / 60-0013-7  
**Isotype** IgG2a  
**Intended Use** USA IVD, CE IVD

**Host** Mouse

**Size** Concentrate 1 mL, 0.5 mL, 0.2 mL / RTU 7 mL  
**Staining Pattern** Membrane  
**Positive Control Tissue** Tonsil



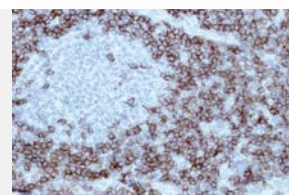
## CD5

**Clone** 4C7

**Catalog No.** 61-0137-2 / 60-0137-7  
**Isotype** IgG1  
**Intended Use** USA IVD, CE IVD

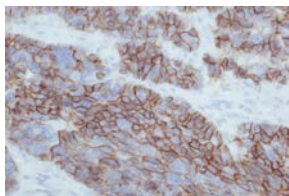
**Host** Mouse

**Size** Concentrate 0.2 mL / RTU 7 mL  
**Staining Pattern** Membrane and Cytoplasm  
**Positive Control Tissue** Tonsil



## IHC - Primary Antibodies

### CD56 (SCLC)



**Clone** 123C3

**Catalog No.** 61-0062, 61-0062-5, 61-0062-2 / 60-0062-7

**Isotype** IgG1

**Intended Use** USA IVD, CE IVD

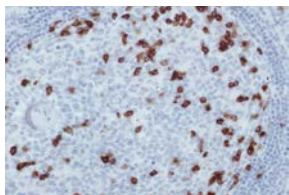
**Host** Mouse

**Size** Concentrate 1 mL, 0.5 mL, 0.2 mL / RTU 7 mL

**Staining Pattern** Cytoplasm and Membrane

**Positive Control Tissue** Small cell lung carcinoma

### CD57



**Clone** TB01

**Catalog No.** 61-0091-2 / 60-0091-7

**Isotype** IgM

**Intended Use** USA IVD, CE IVD

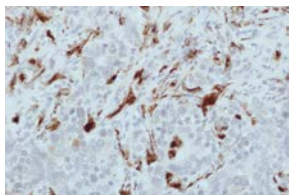
**Host** Mouse

**Size** Concentrate 0.2 mL / RTU 7 mL

**Staining Pattern** Membrane and Cytoplasm

**Positive Control Tissue** Tonsil

### CD68



**Clone** KP1

**Catalog No.** 61-0094-2 / 60-0094-7

**Isotype** IgG1

**Intended Use** USA IVD, CE IVD

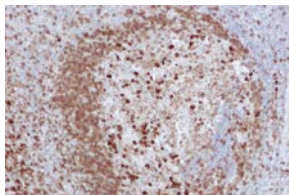
**Host** Mouse

**Size** Concentrate 0.2 mL / RTU 7 mL

**Staining Pattern** Cytoplasm

**Positive Control Tissue** Tonsil

### CD79a



**Clone** JCB117

**Catalog No.** 61-0095-2 / 60-0095-7

**Isotype** IgG1

**Intended Use** USA IVD, CE IVD

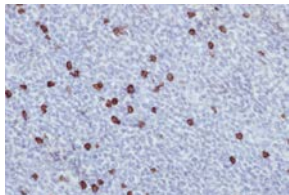
**Host** Mouse

**Size** Concentrate 0.2 mL / RTU 7 mL

**Staining Pattern** Membrane and cytoplasm

**Positive Control Tissue** Tonsil

### CD8



**Clone** C8/144B

**Catalog No.** 61-0124-2 / 60-0124-7

**Isotype** IgG1

**Intended Use** USA IVD, CE IVD

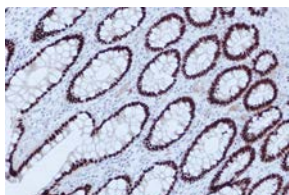
**Host** Mouse

**Size** Concentrate 0.2 mL / RTU 7 mL

**Staining Pattern** Membrane

**Positive Control Tissue** Tonsil, Spleen, Thymus

### CDX2



**Clone** DAK-CDX2

**Catalog No.** 61-0097-2 / 60-0097-7

**Isotype** IgG1

**Intended Use** USA IVD, CE IVD

**Host** Mouse

**Size** Concentrate 0.2 mL / RTU 7 mL

**Staining Pattern** Nucleus

**Positive Control Tissue** Colon Cancer

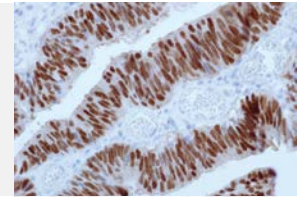
CDX2

**Clone** GR012

**Host** Rabbit

**Catalog No.** 61-0161, 61-0161-5, 61-0161-2 / 60-0161-7  
**Isotype** N/A  
**Intended Use** USA IVD, CE IVD

**Size** Concentrate 1 mL, 0.5 mL, 0.2 mL / RTU 7 mL  
**Staining Pattern** Nucleus  
**Positive Control Tissue** Colon Cancer



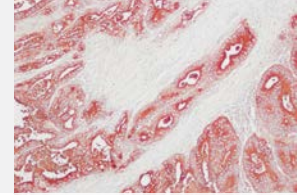
CEA

**Clone** COL-1

**Host** Mouse

**Catalog No.** 61-0014, 61-0014-5, 61-0014-2 / 60-0014-7  
**Isotype** IgG2a  
**Intended Use** USA IVD, CE IVD

**Size** Concentrate 1 mL, 0.5 mL, 0.2 mL / RTU 7 mL  
**Staining Pattern** Cytoplasm and Membrane  
**Positive Control Tissue** Colon Cancer



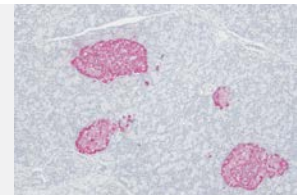
Chromogranin A

**Clone** Poly

**Host** Rabbit

**Catalog No.** 61-0015, 61-0015-5, 61-0015-2 / 60-0015-7  
**Isotype** N/A  
**Intended Use** USA IVD, CE IVD

**Size** Concentrate 1 mL, 0.5 mL, 0.2 mL / RTU 7 mL  
**Staining Pattern** Cytoplasm granular  
**Positive Control Tissue** Neuroendocrine Tumor



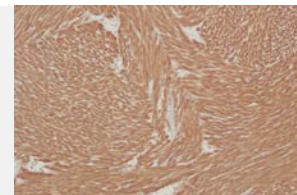
c-Kit (CD117)

**Clone** Poly

**Host** Rabbit

**Catalog No.** 61-0020, 61-0020-5, 61-0020-2 / 60-0020-7  
**Isotype** N/A  
**Intended Use** USA IVD, CE IVD

**Size** Concentrate 1 mL, 0.5 mL, 0.2 mL / RTU 7 mL  
**Staining Pattern** Membrane and Cytoplasm  
**Positive Control Tissue** Gastrointestinal Stromal Tumor



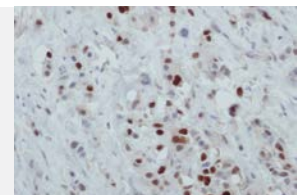
Cyclin D1

**Clone** AM29

**Host** Mouse

**Catalog No.** 61-0021, 61-0021-5, 61-0021-2 / 60-0021-7  
**Isotype** IgG2a  
**Intended Use** USA IVD, CE IVD

**Size** Concentrate 1 mL, 0.5 mL, 0.2 mL / RTU 7 mL  
**Staining Pattern** Nucleus  
**Positive Control Tissue** Mantle Cell Lymphoma or Breast Cancer



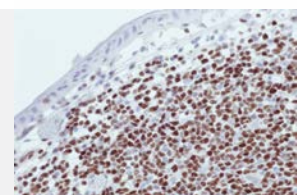
Cyclin D1

**Clone** GR005

**Host** Rabbit

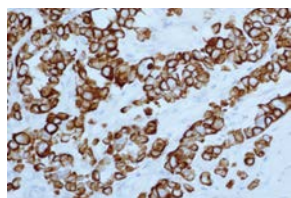
**Catalog No.** 61-0090, 61-0090-5, 61-0090-2 / 60-0090-7  
**Isotype** N/A  
**Intended Use** USA IVD, CE IVD

**Size** Concentrate 1 mL, 0.5 mL, 0.2 mL / RTU 7 mL  
**Staining Pattern** Nucleus  
**Positive Control Tissue** Mantle Cell Lymphoma or Breast Cancer



## IHC - Primary Antibodies

### Cytokeratin



Clone AE1/AE3

Catalog No. 61-0022, 61-0022-5, 61-0022-2 / 60-0022-7

Isotype IgG1

Intended Use USA IVD, CE IVD

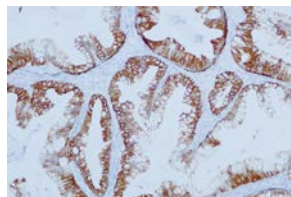
Host Mouse

Size Concentrate 1 mL, 0.5 mL, 0.2 mL / RTU 7 mL

Staining Pattern Cytoplasm

Positive Control Tissue Tissue with epithelial cells

### Cytokeratin



Clone AE1

Catalog No. 61-0023, 61-0023-5, 61-0023-2 / 60-0023-7

Isotype IgG1

Intended Use USA IVD, CE IVD

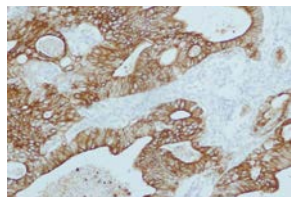
Host Mouse

Size Concentrate 1 mL, 0.5 mL, 0.2 mL / RTU 7 mL

Staining Pattern Cytoplasm

Positive Control Tissue Tissue with epithelial cells

### Cytokeratin



Clone C11

Catalog No. 61-0053, 61-0053-5, 61-0053-2 / 60-0053-7

Isotype IgG1

Intended Use USA IVD, CE IVD

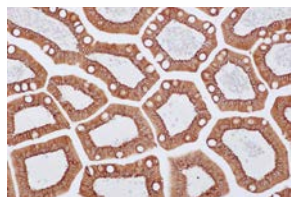
Host Mouse

Size Concentrate 1 mL, 0.5 mL, 0.2 mL / RTU 7 mL

Staining Pattern N/A

Positive Control Tissue N/A

### Cytokeratin 18



Clone DC-10

Catalog No. 61-0017, 61-0017-5, 61-0017-2 / 60-0017-7

Isotype IgG1

Intended Use USA IVD, CE IVD

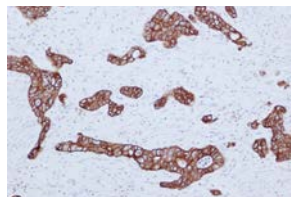
Host Mouse

Size Concentrate 1 mL, 0.5 mL, 0.2 mL / RTU 7 mL

Staining Pattern Cytoplasm

Positive Control Tissue Gastric intestinal tract

### Cytokeratin 19



Clone RCK108

Catalog No. 61-0112-2 / 60-0112-7

Isotype IgG1

Intended Use USA IVD, CE IVD

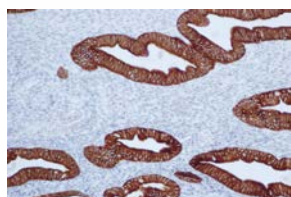
Host Mouse

Size Concentrate 0.2 mL / RTU 7 mL

Staining Pattern Cytoplasm

Positive Control Tissue Tonsil, GI tract

### Cytokeratin 19



Clone A53-B/A2.26

Catalog No. 61-0163-2 / 60-0163-7

Isotype IgG2a

Intended Use USA IVD, CE IVD

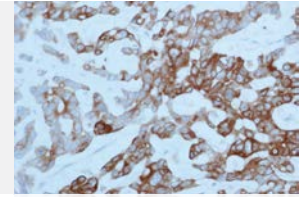
Host Mouse

Size Concentrate 0.2 mL / RTU 7 mL

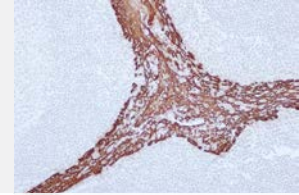
Staining Pattern Cytoplasm

Positive Control Tissue Tonsil, Salivary Gland, and GI Tract

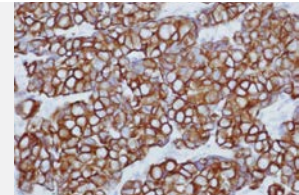
## Cytokeratin 20

**Clone** Ks20.8**Catalog No.** 61-0018, 61-0018-5, 61-0018-2 / 60-0018-7  
**Isotype** IgG2a  
**Intended Use** USA IVD, CE IVD**Host** Mouse**Size** Concentrate 1 mL, 0.5 mL, 0.2 mL / RTU 7 mL  
**Staining Pattern** Cytoplasm  
**Positive Control Tissue** Colon Cancer

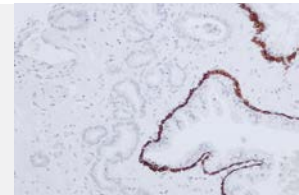
## Cytokeratin 5/6

**Clone** D5/16B4**Catalog No.** 61-0016-2 / 60-0016-7  
**Isotype** IgG1  
**Intended Use** USA IVD, CE IVD**Host** Mouse**Size** Concentrate 0.2 mL / RTU 7 mL  
**Staining Pattern** Cytoplasm  
**Positive Control Tissue** Mesothelioma, prostate

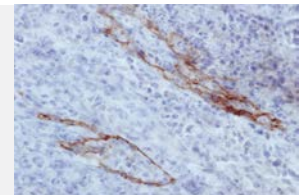
## Cytokeratin 7

**Clone** OV-TL 12/30**Catalog No.** 61-0019, 61-0019-5, 61-0019-2 / 60-0019-7  
**Isotype** IgG1  
**Intended Use** USA IVD, CE IVD**Host** Mouse**Size** Concentrate 1 mL, 0.5 mL, 0.2 mL / RTU 7 mL  
**Staining Pattern** Cytoplasm  
**Positive Control Tissue** Lung Adenocarcinoma

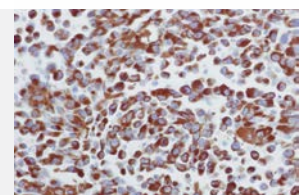
## Cytokeratin HMW

**Clone** 34bE12**Catalog No.** 61-0025, 61-0025-5, 61-0025-2 / 60-0025-7  
**Isotype** IgG1  
**Intended Use** USA IVD, CE IVD**Host** Mouse**Size** Concentrate 1 mL, 0.5 mL, 0.2 mL / RTU 7 mL  
**Staining Pattern** Cytoplasm and Membrane  
**Positive Control Tissue** Prostate

## D2-40

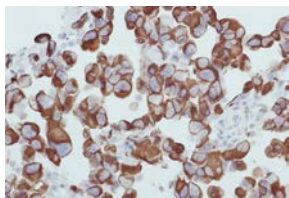
**Clone** D2-40**Catalog No.** 61-0100-2 / 60-0100-7  
**Isotype** IgG1  
**Intended Use** USA IVD, CE IVD**Host** Mouse**Size** Concentrate 0.2 mL / RTU 7 mL  
**Staining Pattern** Cytoplasm and some membrane  
**Positive Control Tissue** Lymph Node

## Desmin

**Clone** D33**Catalog No.** 61-0026, 61-0026-5, 61-0026-2 / 60-0026-7  
**Isotype** IgG1  
**Intended Use** USA IVD, CE IVD**Host** Mouse**Size** Concentrate 1 mL, 0.5 mL, 0.2 mL / RTU 7 mL  
**Staining Pattern** Cytoplasm  
**Positive Control Tissue** Uterus

## IHC - Primary Antibodies

### Desmin



**Clone** GM007

**Catalog No.** 61-0077, 61-0077-5, 61-0077-2 / 60-0077-7

**Isotype** IgG1

**Intended Use** USA IVD, CE IVD

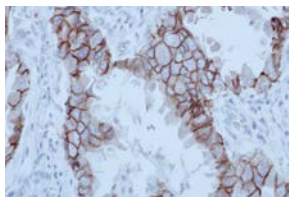
**Host** Mouse

**Size** Concentrate 1 mL, 0.5 mL, 0.2 mL / RTU 7 mL

**Staining Pattern** Cytoplasm

**Positive Control Tissue** Uterus

### E-Cadherin



**Clone** GM016

**Catalog No.** 61-0028, 61-0028-5, 61-0028-2 / 60-0028-7

**Isotype** IgG1

**Intended Use** USA IVD, CE IVD

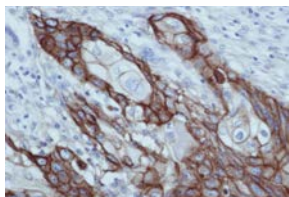
**Host** Mouse

**Size** Concentrate 1 mL, 0.5 mL, 0.2 mL / RTU 7 mL

**Staining Pattern** Membrane and some cytoplasm

**Positive Control Tissue** Esophagus, Endometrium

### EGFR



**Clone** 31G7

**Catalog No.** 61-0027, 61-0027-5, 61-0027-2 / 60-0027-7

**Isotype** IgG1

**Intended Use** USA ASR, CE IVD

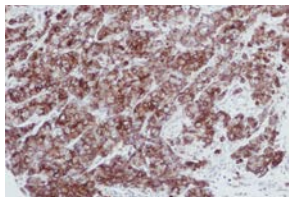
**Host** Mouse

**Size** Concentrate 1 mL, 0.5 mL, 0.2 mL / RTU 7 mL

**Staining Pattern** Membrane and Cytoplasm

**Positive Control Tissue** Lung Cancer

### EMA



**Clone** GM008

**Catalog No.** 61-0030-2 / 60-0030-7

**Isotype** IgG2a

**Intended Use** USA IVD, CE IVD

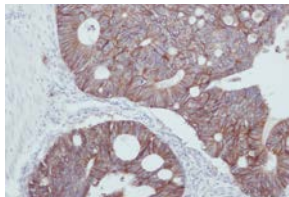
**Host** Mouse

**Size** Concentrate 0.2 mL / RTU 7 mL

**Staining Pattern** Cytoplasm and Membrane

**Positive Control Tissue** Breast Carcinoma

### Epithelial Antigen (Ep-Cam)



**Clone** Ber-EP4

**Catalog No.** 61-0132, 61-0132-5, 61-0132-2 / 60-0132-7

**Isotype** IgG1

**Intended Use** USA IVD, CE IVD

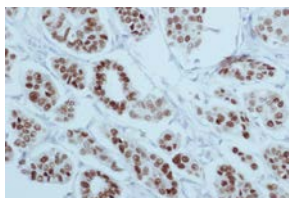
**Host** Mouse

**Size** Concentrate 1 mL, 0.5 mL, 0.2 mL / RTU 7 mL

**Staining Pattern** Membrane and Cytoplasm

**Positive Control Tissue** Colon, Thyroid

### ER



**Clone** 1D5

**Catalog No.** 61-0031, 61-0031-5, 61-0031-2 / 60-0031-7

**Isotype** IgG1

**Intended Use** USA ASR, CE IVD

**Host** Mouse

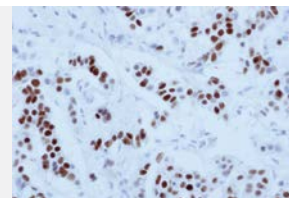
**Size** Concentrate 1 mL, 0.5 mL, 0.2 mL / RTU 7 mL

**Staining Pattern** Nucleus

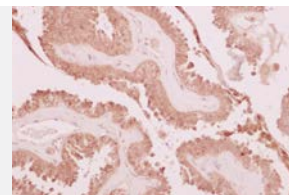
**Positive Control Tissue** Breast Cancer



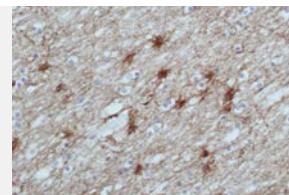
## ER

**Clone** EP1**Catalog No.** 61-0157, 61-0157-5, 61-0157-2 / 60-0157-7**Isotype** N/A**Intended Use** USA ASR, CE IVD**Host** Rabbit**Size** Concentrate 1 mL, 0.5 mL, 0.2 mL / RTU 7 mL**Staining Pattern** Nucleus**Positive Control Tissue** Breast Cancer

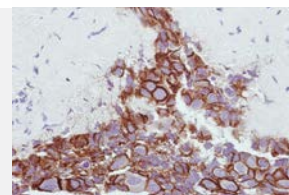
## Galectin-3

**Clone** 9C4**Catalog No.** 61-0133-2 / 60-0133-7**Isotype** IgG1**Intended Use** USA IVD, CE IVD**Host** Mouse**Size** Concentrate 0.2 mL / RTU 7 mL**Staining Pattern** Cytoplasm**Positive Control Tissue** Papillary or Follicular Carcinoma of Thyroid

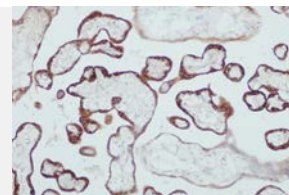
## GFAP

**Clone** Poly**Catalog No.** 61-0032, 61-0032-5, 61-0032-2 / 60-0032-7**Isotype** N/A**Intended Use** USA IVD, CE IVD**Host** Rabbit**Size** Concentrate 1 mL, 0.5 mL, 0.2 mL / RTU 7 mL**Staining Pattern** Cytoplasm**Positive Control Tissue** Astrocytomas

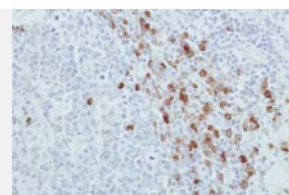
## HER2 (c-erbB-2)

**Clone** TAB250**Catalog No.** 61-0033, 61-0033-5, 61-0033-2 / 60-0033-7**Isotype** IgG1**Intended Use** USA ASR, CE IVD**Host** Mouse**Size** Concentrate 1 mL, 0.5 mL, 0.2 mL / RTU 7 mL**Staining Pattern** Membrane**Positive Control Tissue** Breast Cancer

## Human Chorionic Gonadotropin (hCG)

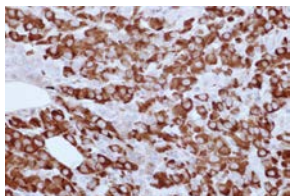
**Clone** Poly**Catalog No.** 61-0125, 61-0125-5, 61-0125-2 / 60-0125-7**Isotype** N/A**Intended Use** USA IVD, CE IVD**Host** Rabbit**Size** Concentrate 1 mL, 0.5 mL, 0.2 mL / RTU 7 mL**Staining Pattern** Cytoplasm**Positive Control Tissue** Germ cell tumor, Chorionic carcinoma

## Human Kappa Light Chain

**Clone** HP6053**Catalog No.** 61-0037, 61-0037-5, 61-0037-2 / 60-0037-7**Isotype** IgG1**Intended Use** USA IVD, CE IVD**Host** Mouse**Size** Concentrate 1 mL, 0.5 mL, 0.2 mL / RTU 7 mL**Staining Pattern** Cytoplasm and Membrane**Positive Control Tissue** Tonsil

# IHC - Primary Antibodies

## Human Kappa Light Chain



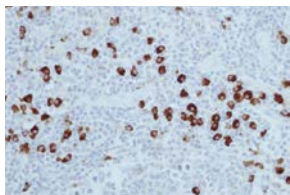
Clone Poly

Catalog No. 61-0085, 61-0085-5, 61-0085-2 / 60-0085-7  
Isotype N/A  
Intended Use USA IVD, CE IVD

Host Rabbit

Size Concentrate 1 mL, 0.5 mL, 0.2 mL / RTU 7 mL  
Staining Pattern Cytoplasm and Membrane  
Positive Control Tissue Tonsil

## Human Lambda Light Chain



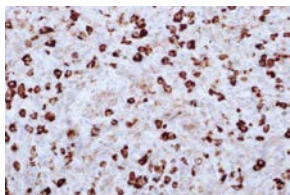
Clone HP6054

Catalog No. 61-0038, 61-0038-5, 61-0038-2 / 60-0038-7  
Isotype IgG2a  
Intended Use USA IVD, CE IVD

Host Mouse

Size Concentrate 1 mL, 0.5 mL, 0.2 mL / RTU 7 mL  
Staining Pattern Cytoplasm and Membrane  
Positive Control Tissue Tonsil

## Human Lambda Light Chain



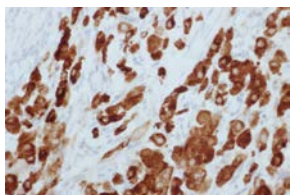
Clone Poly

Catalog No. 61-0086, 61-0086-5, 61-0086-2 / 60-0086-7  
Isotype N/A  
Intended Use USA IVD, CE IVD

Host Rabbit

Size Concentrate 1 mL, 0.5 mL, 0.2 mL / RTU 7 mL  
Staining Pattern Cytoplasm and Membrane  
Positive Control Tissue Tonsil

## Inhibin Alpha



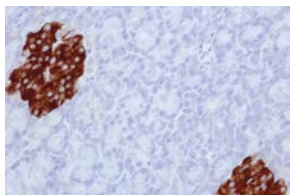
Clone R1

Catalog No. 60-0111-7  
Isotype IgG2a  
Intended Use USA IVD, CE IVD

Host Mouse

Size RTU 7 mL  
Staining Pattern Cytoplasm  
Positive Control Tissue Testis, Ovary

## Insulin



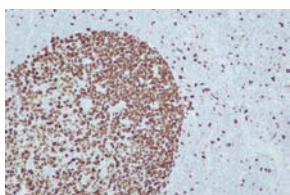
Clone 2D11-H5

Catalog No. 61-0039, 61-0039-5, 61-0039-2 / 60-0039-7  
Isotype IgG1  
Intended Use USA IVD, CE IVD

Host Mouse

Size Concentrate 1 mL, 0.5 mL, 0.2 mL / RTU 7 mL  
Staining Pattern Cytoplasm  
Positive Control Tissue Pancreas

## Ki-67



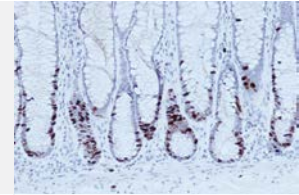
Clone GM001

Catalog No. 61-0040, 61-0040-5, 61-0040-2 / 60-0040-7  
Isotype IgG1  
Intended Use USA IVD, CE IVD

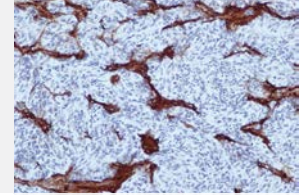
Host Mouse

Size Concentrate 1 mL, 0.5 mL, 0.2 mL / RTU 7 mL  
Staining Pattern Nucleus  
Positive Control Tissue Tonsil

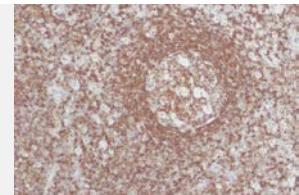
## Ki-67

**Clone** GM010**Catalog No.** 61-0078, 61-0078-5, 61-0078-2 / 60-0078-7**Isotype** IgG2b**Intended Use** USA IVD, CE IVD**Host** Mouse**Size** Concentrate 1 mL, 0.5 mL, 0.2 mL / RTU 7 mL**Staining Pattern** Nucleus**Positive Control Tissue** Tonsil

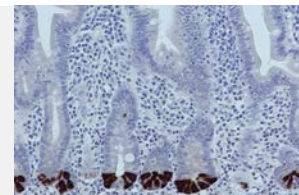
## Laminin

**Clone** Poly**Catalog No.** 60-0113-7**Isotype** N/A**Intended Use** USA IVD, CE IVD**Host** Rabbit**Size** RTU 7 mL**Staining Pattern** Basement Membrane**Positive Control Tissue** Lung Cancer

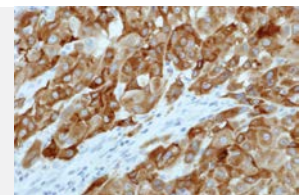
## LCA (CD45)

**Clone** MEM28/55/56**Catalog No.** 61-0041, 61-0041-5, 61-0041-2 / 60-0041-7**Isotype** IgG1 and IgG2b**Intended Use** USA IVD, CE IVD**Host** Mouse**Size** Concentrate 1 mL, 0.5 mL, 0.2 mL / RTU 7 mL**Staining Pattern** Membrane**Positive Control Tissue** Tonsil

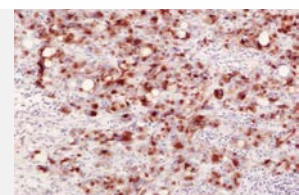
## Lysozyme (Muramidase)

**Clone** Poly**Catalog No.** 61-0118, 61-0118-5, 61-0118-2 / 60-0118-7**Isotype** N/A**Intended Use** USA IVD, CE IVD**Host** Rabbit**Size** Concentrate 1 mL, 0.5 mL, 0.2 mL / RTU 7 mL**Staining Pattern** Cytoplasm**Positive Control Tissue** Small Intestine

## Melan-A

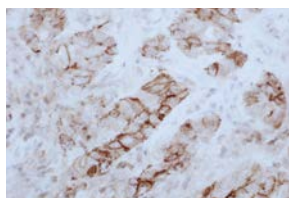
**Clone** A103**Catalog No.** 61-0092-2 / 60-0092-7**Isotype** IgG1**Intended Use** USA IVD, CE IVD**Host** Mouse**Size** Concentrate 0.2 mL / RTU 7 mL**Staining Pattern** Cytoplasm**Positive Control Tissue** Melanoma

## Melanosome

**Clone** HMB45**Catalog No.** 61-0042, 61-0042-5, 61-0042-2 / 60-0042-7**Isotype** IgG1**Intended Use** USA IVD, CE IVD**Host** Mouse**Size** Concentrate 1 mL, 0.5 mL, 0.2 mL / RTU 7 mL**Staining Pattern** Cytoplasm**Positive Control Tissue** Melanoma

# IHC - Primary Antibodies

## Mesothelial Cell



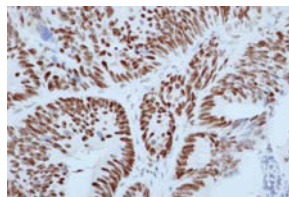
**Clone** HBME-1

**Catalog No.** 61-0127-2 / 60-0127-7  
**Isotype** IgM  
**Intended Use** USA IVD, CE IVD

**Host** Mouse

**Size** Concentrate 0.2 mL / RTU 7 mL  
**Staining Pattern** Membrane and cytoplasm  
**Positive Control Tissue** Mesothelioma or Salivary Gland or Spleen

## MLH1



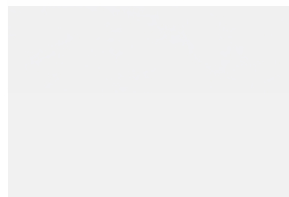
**Clone** GM011

**Catalog No.** 61-0079, 61-0079-5, 61-0079-2 / 60-0079-7  
**Isotype** IgG1  
**Intended Use** USA IVD, CE IVD

**Host** Mouse

**Size** Concentrate 1 mL, 0.5 mL, 0.2 mL / RTU 7 mL  
**Staining Pattern** Nucleus  
**Positive Control Tissue** Colon

## MSH2



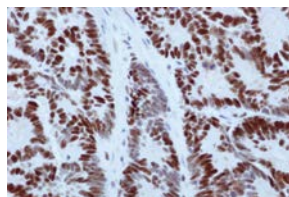
**Clone** FE11

**Catalog No.** 60-0046-7  
**Isotype** IgG1  
**Intended Use** USA IVD, CE IVD

**Host** Mouse

**Size** RTU 7 mL  
**Staining Pattern** Nucleus  
**Positive Control Tissue** Tonsil or Colon Cancer

## MSH6



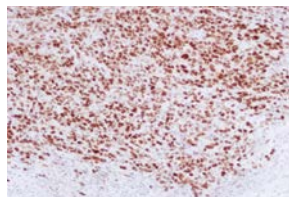
**Clone** GM024

**Catalog No.** 61-0158, 61-0158-5, 61-0158-2 / 60-0158-7  
**Isotype** IgG2a  
**Intended Use** USA IVD, CE IVD

**Host** Mouse

**Size** Concentrate 1 mL, 0.5 mL, 0.2 mL / RTU 7 mL  
**Staining Pattern** Nucleus  
**Positive Control Tissue** Colon Cancer

## MUM-1



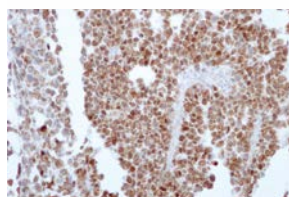
**Clone** MUM1p

**Catalog No.** 61-0136, 61-0136-5, 61-0136-2 / 60-0136-7  
**Isotype** IgG1  
**Intended Use** USA IVD, CE IVD

**Host** Mouse

**Size** Concentrate 1 mL, 0.5 mL, 0.2 mL / RTU 7 mL  
**Staining Pattern** Nucleus  
**Positive Control Tissue** Tonsil or Myeloma

## MyoD1



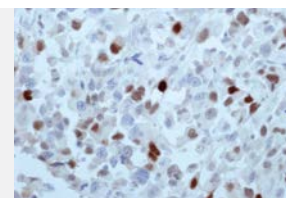
**Clone** 5.8A

**Catalog No.** 61-0101-2 / 60-0101-7  
**Isotype** IgG1  
**Intended Use** USA IVD, CE IVD

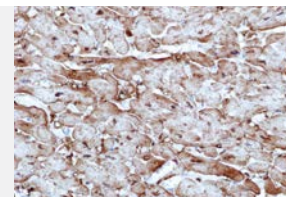
**Host** Mouse

**Size** Concentrate 0.2 mL / RTU 7 mL  
**Staining Pattern** Nucleus  
**Positive Control Tissue** Rhabdomyosarcoma

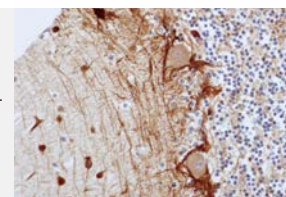
## Myogenin

**Clone** F5D**Catalog No.** 61-0149-2 / 60-0149-7**Isotype** IgG1**Intended Use** USA IVD, CE IVD**Host** Mouse**Size** Concentrate 0.2 mL / RTU 7 mL**Staining Pattern** Nucleus**Positive Control Tissue** Rhabdomyosarcoma

## Myoglobin

**Clone** MY018**Catalog No.** 61-0114-2 / 60-0114-7**Isotype** IgG1**Intended Use** USA IVD, CE IVD**Host** Mouse**Size** Concentrate 0.2 mL / RTU 7 mL**Staining Pattern** Cytoplasm**Positive Control Tissue** Heart Muscle

## Neurofilaments (Pan)

**Clone** 2F11**Catalog No.** 61-0048, 61-0048-5, 61-0048-2 / 60-0048-7**Isotype** IgG1**Intended Use** USA IVD, CE IVD**Host** Mouse**Size** Concentrate (1:60) 1 mL, 0.5 mL, 0.2 mL / RTU 7 mL**Staining Pattern** Cytoplasm**Positive Control Tissue** Brain

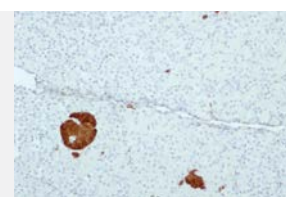
## Non-Immune Mouse Immunoglobulin

**Clone** N/A**Catalog No.** 60-0045-7**Isotype** N/A**Intended Use** USA IVD, CE IVD**Host** Mouse**Size** RTU 7 mL**Staining Pattern** No staining**Positive Control Tissue** N/A

## Non-Immune Rabbit Immunoglobulin

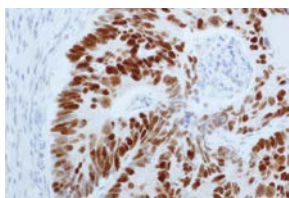
**Clone** N/A**Catalog No.** 60-0060-7**Isotype** N/A**Intended Use** USA IVD, CE IVD**Host** Rabbit**Size** RTU 7 mL**Staining Pattern** No staining**Positive Control Tissue** N/A

## NSE

**Clone** GM021**Catalog No.** 61-0131-2 / 60-0131-7**Isotype** IgG1**Intended Use** USA IVD, CE IVD**Host** Mouse**Size** Concentrate 0.2 mL / RTU 7 mL**Staining Pattern** Cytoplasm**Positive Control Tissue** Neuroendocrine Tumor

## IHC - Primary Antibodies

### p53



**Clone** BP-53-12

**Catalog No.** 61-0050, 61-0050-5, 61-0050-2 / 60-0050-7

**Isotype** IgG2a

**Intended Use** USA IVD, CE IVD

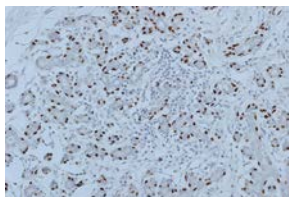
**Host** Mouse

**Size** Concentrate 1 mL, 0.5 mL, 0.2 mL / RTU 7 mL

**Staining Pattern** Nucleus

**Positive Control Tissue** Colon Cancer

### p63



**Clone** 4B1E12

**Catalog No.** 61-0074, 61-0074-5, 61-0074-2 / 60-0074-7

**Isotype** IgG2b

**Intended Use** USA IVD, CE IVD

**Host** Mouse

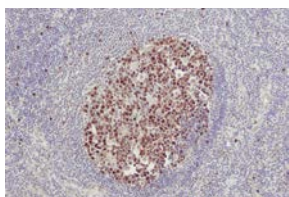
**Size** Concentrate 1 mL, 0.5 mL, 0.2 mL / RTU 7 mL

**Staining Pattern** Nucleus

**Positive Control Tissue** Breast

For outside USA only

### PCNA



**Clone** PC10

**Catalog No.** 61-0054, 61-0054-5, 61-0054-2 / 60-0054-7

**Isotype** IgG2a

**Intended Use** USA IVD, CE IVD

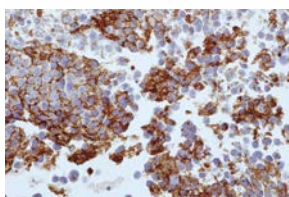
**Host** Mouse

**Size** Concentrate 1 mL, 0.5 mL, 0.2 mL / RTU 7 mL

**Staining Pattern** Nucleus

**Positive Control Tissue** Tonsil

### PLAP



**Clone** GM022

**Catalog No.** 61-0139, 61-0139-5, 61-0139-2 / 60-0139-7

**Isotype** IgG2b

**Intended Use** USA IVD, CE IVD

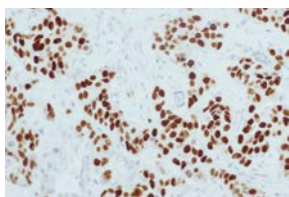
**Host** Mouse

**Size** Concentrate 1 mL, 0.5 mL, 0.2 mL / RTU 7 mL

**Staining Pattern** Cytoplasm and membrane

**Positive Control Tissue** Placenta, Seminoma

### PR



**Clone** Y85

**Catalog No.** 61-0056, 61-0056-5, 61-0056-2 / 60-0056-7

**Isotype** N/A

**Intended Use** USA ASR, CE IVD

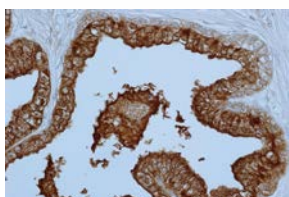
**Host** Rabbit

**Size** Concentrate 1 mL, 0.5 mL, 0.2 mL / RTU 7 mL

**Staining Pattern** Nucleus

**Positive Control Tissue** Breast

### PSA



**Clone** Poly

**Catalog No.** 61-0058, 61-0058-5, 61-0058-2 / 60-0058-7

**Isotype** N/A

**Intended Use** USA IVD, EU RUO

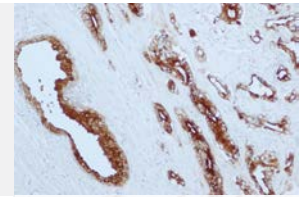
**Host** Rabbit

**Size** Concentrate 1 mL, 0.5 mL, 0.2 mL / RTU 7 mL

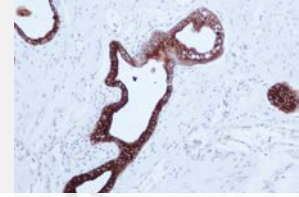
**Staining Pattern** Cytoplasm

**Positive Control Tissue** Prostate

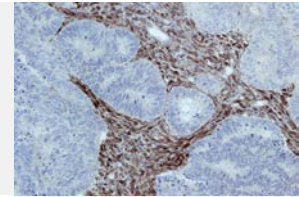
## PSA

**Clone** 140**Catalog No.** 61-0057, 61-0057-5, 61-0057-2 / 60-0057-7**Isotype** IgG2a**Intended Use** USA IVD, EU RUO**Host** Mouse**Size** Concentrate 1 mL, 0.5 mL, 0.2 mL / RTU 7 mL**Staining Pattern** Cytoplasm**Positive Control Tissue** Prostate

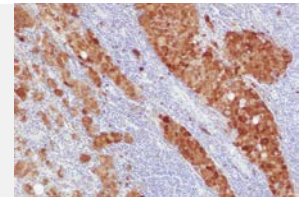
## PsAP

**Clone** PASE/4LJ**Catalog No.** 61-0104, 61-0104-5, 61-0104-2 / 60-0104-7**Isotype** IgG1**Intended Use** USA IVD, CE IVD**Host** Mouse**Size** Concentrate 1 mL, 0.5 mL, 0.2 mL / RTU 7 mL**Staining Pattern** Cytoplasm**Positive Control Tissue** Prostate

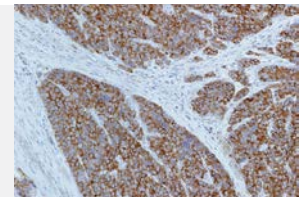
## PTEN

**Clone** 6H2.1**Catalog No.** 61-0107-2 / 60-0107-7**Isotype** IgG2a**Intended Use** USA IVD, CE IVD**Host** Mouse**Size** Concentrate 0.2 mL / RTU 7 mL**Staining Pattern** Cytoplasm and Nucleus**Positive Control Tissue** Breast Cancer

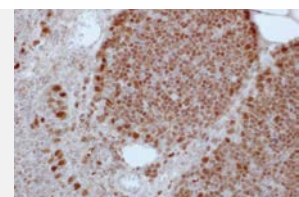
## S-100

**Clone** Poly**Catalog No.** 61-0061, 61-0061-5, 61-0061-2 / 60-0061-7**Isotype** N/A**Intended Use** USA IVD, CE IVD**Host** Rabbit**Size** Concentrate 1 mL, 0.5 mL, 0.2 mL / RTU 7 mL**Staining Pattern** Cytoplasm**Positive Control Tissue** Melanoma

## Synaptophysin

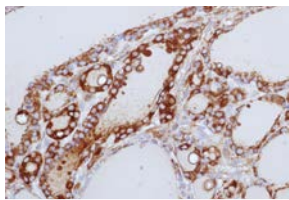
**Clone** GR007**Catalog No.** 61-0122, 61-0122-5, 61-0122-2 / 60-0122-7**Isotype** N/A**Intended Use** USA IVD, CE IVD**Host** Rabbit**Size** Concentrate 1 mL, 0.5 mL, 0.2 mL / RTU 7 mL**Staining Pattern** Cytoplasm**Positive Control Tissue** Gastric

## TdT

**Clone** Poly**Catalog No.** 61-0115-2 / 60-0115-7**Isotype** N/A**Intended Use** USA IVD, CE IVD**Host** Rabbit**Size** Concentrate 0.2 mL / RTU 7 mL**Staining Pattern** Nucleus**Positive Control Tissue** Thymus

## IHC - Primary Antibodies

### Thyroglobulin



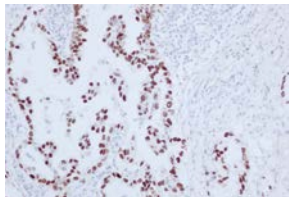
Clone 2H11/6E1

Catalog No. 61-0064, 61-0064-5, 61-0064-2 / 60-0064-7  
Isotype IgG1  
Intended Use USA IVD, CE IVD

Host Mouse

Size Concentrate 1 mL, 0.5 mL, 0.2 mL / RTU 7 mL  
Staining Pattern Cytoplasm and extracellular  
Positive Control Tissue Thyroid

### TTF-1



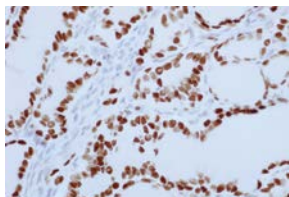
Clone 8G7G3/1

Catalog No. 61-0065, 61-0065-5, 61-0065-2 / 60-0065-7  
Isotype IgG1  
Intended Use USA IVD, CE IVD

Host Mouse

Size Concentrate 1 mL, 0.5 mL, 0.2 mL / RTU 7 mL  
Staining Pattern Nucleus  
Positive Control Tissue Thyroid

### TTF-1



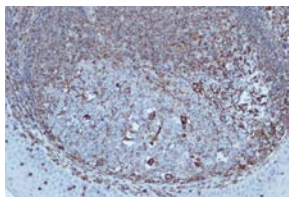
Clone SPT-24

Catalog No. 61-0152, 61-0152-5, 61-0152-2, 60-0152-7  
Isotype IgG1  
Intended Use USA IVD, CE IVD

Host Mouse

Size Concentrate 1 mL, 0.5 mL, 0.2 mL / RTU 7 mL  
Staining Pattern Nucleus  
Positive Control Tissue Thyroid

### Vimentin



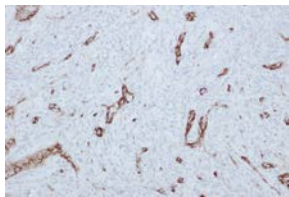
Clone V9

Catalog No. 61-0066, 61-0066-5, 61-0066-2 / 60-0066-7  
Isotype IgG1  
Intended Use USA IVD, CE IVD

Host Mouse

Size Concentrate 1 mL, 0.5 mL, 0.2 mL / RTU 7 mL  
Staining Pattern Cytoplasm  
Positive Control Tissue Tonsil

### Von Willebrand Factor (Factor VIII RA)



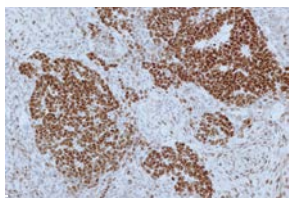
Clone Poly

Catalog No. 61-0109, 61-0109-5, 61-0109-2 / 60-0109-7  
Isotype N/A  
Intended Use USA IVD, CE IVD

Host Rabbit

Size Concentrate 1 mL, 0.5 mL, 0.2 mL / RTU 7 mL  
Staining Pattern Cytoplasm  
Positive Control Tissue Tonsil

### WT1



Clone 6F-H2

Catalog No. 61-0135-2 / 60-0135-7  
Isotype IgG1  
Intended Use USA IVD, CE IVD

Host Mouse

Size Concentrate 0.2 mL / RTU 7 mL  
Staining Pattern Nucleus and cytoplasm  
Positive Control Tissue Wilms' Tumor



## Immunohistochemistry Poly Detection Kits

Genemed offers highly-sensitive polymer detection systems for immunohistochemistry applications. Genemed's sensitive and easy-to-use detection systems enable strong staining signals with lowest possible background. We provide ready-to-use IHC detection reagents to meet variable needs, e.g. for mouse, or/and rabbit primary antibody; peroxidase (HRP) or alkaline phosphatase (AP) enzymes.

### Power-Stain™ 1.0 Double Stain Kit I (Poly HRP for Mouse + Poly AP for Rabbit)

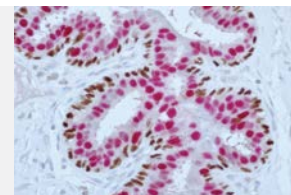
**Kit Includes** Poly HRP Conjugate for Mouse + Poly AP for Rabbit

**Catalog No.** 52-0023

**Size** 15 mL

**Intended Use** USA IVD, CE IVD

**No. of Tests** 150



**Description** This kit is a non-biotin system and utilizes a Poly HRP (horseradish peroxidase) and Poly AP (alkaline phosphatase) conjugates to locate where the mouse or rabbit primary antibody is bound to the target antigens. The complexes formed between Poly HRP conjugate with mouse primary antibody and Poly AP conjugate with rabbit primary antibody are observed through the use of two substrate-chromogen solutions, which when added sequentially, result in two colored precipitates at the antigen locations. The staining location and pattern is easily observable by light microscopy.

### Power-Stain™ 1.0 Double Stain Kit II (Poly AP for Mouse + Poly HRP for Rabbit)

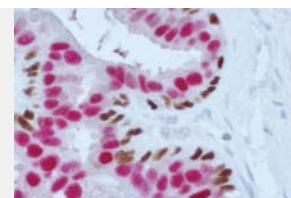
**Kit Includes** Poly AP Conjugate for Mouse + Poly HRP for Rabbit

**Catalog No.** 52-0024

**Size** 15 mL

**Intended Use** USA IVD, CE IVD

**No. of Tests** 150



**Description** This kit is a non-biotin system and utilizes a Poly AP (alkaline phosphatase) and Poly HRP (horseradish peroxidase) conjugates to locate where the mouse or rabbit primary antibody is bound to the target antigens. The complexes formed between Poly AP conjugate with mouse primary antibody and Poly HRP conjugate with rabbit primary antibody are observed through the use of two substrate-chromogen solutions, which when added sequentially, result in two colored precipitates at the antigen locations. The staining location and pattern is easily observable by light microscopy.

### Power-Stain™ 1.0 Poly AP Kit for Mouse + Rabbit

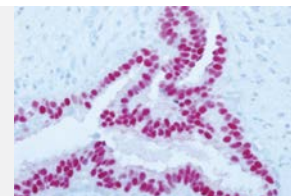
**Kit Includes** Poly AP Conjugate for Mouse + Rabbit, AP Substrate-Chromogen Solution

**Catalog No.** 52-0020

**Size** 15 mL

**Intended Use** USA IVD, CE IVD

**No. of Tests** 150



**Description** This kit is a non-biotin system and utilizes a Poly AP (alkaline phosphatase) conjugate to locate where the mouse or rabbit primary antibody is bound to the target antigen. The complex formed between Poly AP conjugate and the mouse or rabbit primary antibody is observed through the use of a substrate-chromogen solution, which when added, results in a colored precipitate at the antigen location. The staining location and pattern is easily observable by light microscopy.

### Power-Stain™ 1.0 Poly HRP AEC Kit for Mouse + Rabbit

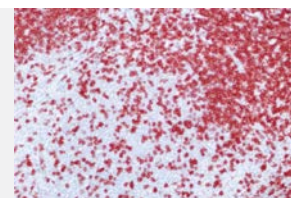
**Kit Includes** Poly HRP Conjugate for Mouse + Rabbit, AEC Substrate (Single Solution)

**Catalog No.** 52-0022, 54-0022

**Size** 15 mL, 100 mL

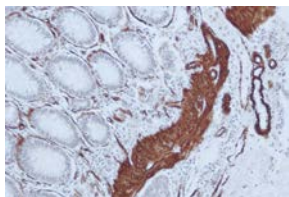
**Intended Use** USA IVD, CE IVD

**No. of Tests** 150/1000



**Description** This kit is a non-biotin system and utilizes a Poly HRP (horseradish peroxidase) conjugate to locate where the mouse or rabbit primary antibody is bound to the target antigen. The complex formed between Poly HRP conjugate and the mouse or rabbit primary antibody is observed through the use of a substrate-chromogen solution, which when added, results in a colored precipitate at the antigen location. The staining location and pattern is easily observable by light microscopy.

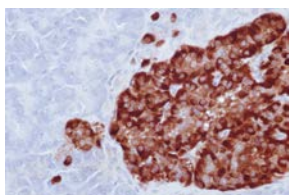
**Power-Stain™ 1.0 Poly HRP DAB Kit for Mouse + Rabbit**



<b>Kit Includes</b>	Poly HRP Conjugate for Mouse + Rabbit, DAB Chromogen and Buffer Solutions		
<b>Catalog No.</b>	52-0017, 54-0017	<b>Size</b>	15 mL, 100 mL
<b>Intended Use</b>	USA IVD, CE IVD	<b>No. of Tests</b>	150/1000

**Description** This kit is a non-biotin system and utilizes a Poly HRP (horseradish peroxidase) conjugate to locate where the mouse or rabbit primary antibody is bound to the target antigen. The complex formed between Poly HRP conjugate and the mouse or rabbit primary antibody is observed through the use of a substrate-chromogen solution, which when added, results in a colored precipitate at the antigen location. The staining location and pattern is easily observable by light microscopy.

**Power-Stain™ 2.0 Poly HRP Kit for Mouse + Rabbit**



<b>Kit Includes</b>	Poly HRP Conjugate for Mouse + Rabbit, Linker for Mouse + Rabbit Antibody		
<b>Catalog No.</b>	52-0006, 54-0006	<b>Size</b>	15 mL, 100 mL
<b>Intended Use</b>	USA IVD, CE IVD	<b>No. of Tests</b>	150/1000

**Description** This kit is a non-biotin system and utilizes linker to locate where the mouse and/or rabbit primary antibody is bound to the target antigen. Poly HRP (horseradish peroxidase) conjugate is then applied and binds to the linker. This complex is observed through the use of a substrate-chromogen solution, which when added, results in a colored precipitate at the antigen location. The staining location and pattern is easily observable by light microscopy.

**Acu-Stain™ AP Kit Mouse + Rabbit**

<b>Kit Includes</b>	Blocking Solution, Biotinylated Goat anti-Mouse + Rabbit Secondary Antibody, Alkaline Phosphatase (AP)		
<b>Catalog No.</b>	52-0009	<b>Size</b>	15 mL
<b>Intended Use</b>	USA IVD, CE IVD	<b>No. of Tests</b>	150

**Description** This kit utilizes a biotinylated secondary antibody to locate where the mouse and/or rabbit primary antibody is bound to the target antigen. Streptavidin-AP (alkaline phosphatase) is then applied and binds to the secondary antibody. This complex is observed through the use of a substrate-chromogen solution, which when added, results in a colored precipitate at the antigen location. The staining location and pattern is easily observable by light microscopy.

**Acu-Stain™ HRP Kit Mouse + Rabbit**



<b>Kit Includes</b>	Blocking Solution, Biotinylated Goat anti-Mouse + Rabbit Secondary Antibody, Streptavidin-Peroxidase (HRP)		
<b>Catalog No.</b>	52-0003, 54-0003	<b>Size</b>	15 mL, 100 mL
<b>Intended Use</b>	USA IVD, CE IVD	<b>No. of Tests</b>	150/1000

**Description** This kit utilizes a biotinylated secondary antibody to locate where the mouse and/or rabbit primary antibody is bound to the target antigen. Streptavidin-HRP (horseradish peroxidase) is then applied and binds to the secondary antibody. This complex is observed through the use of a substrate-chromogen solution, which when added, results in a colored precipitate at the antigen location. The staining location and pattern is easily observable by light microscopy.

## Immunohistochemistry Ancillary Reagents

	Description	Catalog No.	Size	Intended Use
Buffer	PBS and 0.05% Tween 20, pH 7.4 (1X)	10-0060	1000 mL	USA IVD, CE IVD
	PBS Powder (1L of 10X per pouch)	10-0044	2 Pouches	USA IVD, CE IVD
	TBST (Tris Buffered Saline and 0.05% Tween 20), pH 7.4 (20X)	10-0028, 10-0172	100 mL, 1000 mL	USA IVD, CE IVD
	Tween 20 (50%)	10-0031	15 mL	USA IVD, CE IVD
Chromogen	AEC Substrate (Single Solution)	10-0047, 10-0005	15 mL, 100 mL	USA IVD, CE IVD
	AEC Substrate Kit (Three Solutions) (20X)	10-0055	12 mL	USA IVD, CE IVD
	BCIP/NBT Substrate Kit	10-0007	100 mL	RUO
	DAB Substrate Kit	10-0006	200 mL	USA IVD, CE IVD
	Liquid Fast Red Substrate Kit	10-0008	100 mL	RUO
	Sensitive DAB Substrate Kit	10-0048	200 mL	USA IVD, CE IVD
Conjugate	AP Streptavidin Conjugate	10-0011	1 mL	RUO
	Biotin Goat anti-Mouse IgG+ IgM (H+L)	10-0012	1 mL	RUO
	Biotin Goat anti-Rabbit IgG (H+L)	10-0013	1 mL	RUO
	FITC Goat anti-Human IgG (H+L)	10-0052	1 mL	RUO
	FITC Goat anti-Human IgG+A+M (H+L)	10-0057	1 mL	RUO
	FITC Goat anti-Human IgM (μ chain specific)	10-0051	1 mL	RUO
	FITC Goat anti-Rabbit IgG (H+L)	10-0054	1 mL	RUO
	FITC Streptavidin	10-0053	1 mL	RUO
	HRP Streptavidin Conjugate	10-0010	1 mL	RUO
Diluent	Antibody Diluent for Automated Stainers	10-0058	500 mL	USA IVD, CE IVD
	HRP Conjugate Diluent	10-0003	500 mL	RUO
	Primary Antibody Diluent	10-0001	500 mL	USA IVD, CE IVD
Counterstain & Mounting	CleanMount™ Aqueous Mounting Solution	10-0034, 10-0035	15 mL, 100 mL	USA IVD, CE IVD
	GVAqueous Mounting Solution	10-0033	15 mL	USA IVD, CE IVD
	Mayer's Hematoxylin	10-0027, 10-0049	100 mL, 1000 mL	USA IVD, CE IVD
	Mini PAP Pen	10-0041	Ea	USA IVD, CE IVD
	Super PAP Pen	10-0045	Ea	USA IVD, CE IVD
Others	TMB Single Substrate Solution for ELISA	10-0009	500 mL	RUO
Prestaining	A/B Block (Avidin/Biotin Blocking Solution)	10-0039	15 mL	USA IVD, CE IVD
	C-Block (Casein Blocking Solution)	10-0040	100 mL	USA IVD, CE IVD
	Blocking Solution	10-0032	100 mL	USA IVD, CE IVD
Pretreatment	Citrate Buffer, pH 6 (1X)	10-0022	1000 mL	USA IVD, CE IVD
	Citrate Buffer, pH 6 (10X)	10-0062	500 mL	USA IVD, CE IVD
	Citrate Buffer, pH 6 (20X)	10-0020	100 mL	USA IVD, CE IVD
	Ficin Solution	10-0050	50 mL	USA IVD, CE IVD
	Pepsin Solution	10-0026	50 mL	USA IVD, CE IVD
	Peroxidase Blocking Solution	10-0056	100 mL	USA IVD, CE IVD
	Proteinase K	10-0024	50 mL	USA IVD, CE IVD
	Tris Buffer, pH 9 (1X)	10-0023	1000 mL	USA IVD, CE IVD
	Tris Buffer, pH 9 (20X)	10-0021	100 mL	USA IVD, CE IVD
	Tris EDTA Buffer, pH 9 (1X)	10-0046	1000 mL	USA IVD, CE IVD
	Tris EDTA Buffer, pH 9 (20X)	10-0037	100 mL	USA IVD, CE IVD
	Trypsin Concentrate and Diluent	10-0025	100 mL	USA IVD, CE IVD

# International Distributors

## Albania

### Bioland

25is Martiou str., 19018, Greece  
 Phone: +355-210.5559053  
 Fax: +355.210..5555660  
 Email: info@bioland.com.gr  
 Website: www.bioland.com.gr

## Algeria

### CliniSciences SAS

183 Avenue Georges Clemenceau 92000 Nanterre, France  
 Phone: +33.1.42.53.14.53  
 Fax: +33.1.46.56.97.33  
 Email: info@clinisciences.com  
 Website: www.clinisciences.com

## Australia

### Australian Biosearch

nit 3, 31 Ledger Road Balcatta, Western Australia, 6021  
 Phone: +61.08.9240.5999  
 Fax: +61.08.9240.8820  
 Email: customerservice@aust-biosearch.com.au  
 Website: www.aust-biosearch.com.au

## Austria

### BioCat GmbH

Im Neuenheimer Feld 584, D-69120 Heidelberg, Germany  
 Phone: +49.6221.7141516  
 Fax: +49.6221.7141529  
 Email: info@biocat.com  
 Website: www.biocat.com

## Belgium

### Gentaur Europe BVBA

Voorstraat 49, 1910 Kampenhout, Belgium  
 Phone: +32.16.58.90.45  
 Fax: +32.16.50.90.45  
 Email: info@gentaur.com  
 Website: www.gentaur.com

### Sanbio B.V.

Frontstraat 2c 5405 PB Uden, The Netherlands  
 Phone: +31.413.251.115  
 Fax: +31.413.266.605  
 Email: sanbio@sanbio.nl  
 Website: www.sanbio.nl

## Brazil

### Biogen Comercial e Distribuidora Ltda.

Rua Paulistana, 319 – Sumarezinho, Sao Paulo – SP 05440-000, Brazil  
 Phone: +55.11.3819.3191  
 Fax: +55.11.3819.3191  
 Email: ignazio@biogenbr.com.br  
 Website: www.biogenbr.com.br

## Bulgaria

### Gentaur Bulgaria

53, Graf Ignatiev Str. ent.V, fl. 2 Sofia 1000  
 Phone: +359.29830070  
 Fax: +359.29830072  
 Email: sofia@gentaur.com  
 Website: www.gentaur.com

## China

### Beijing XiYa JinQiao Biological Technology Co. Ltd.

5, Zhaoli Industrial Zone, Lucheng Town, Tongzhou District, Beijing, 101117, China  
 Phone: +86.10.64263132  
 Fax: +86.10.6420083  
 Email: xiya@bjgbbio.com  
 Website: www.bjgbbio.com

## Denmark

### Nordic BioSite ApS

Toldbodgade 18, 5 DK-1253 Copenhagen Denmark  
 Phone: +45.4240.8485  
 Fax: +45.8.756.94.90  
 Email: info@nordicbiosite.com  
 Website: www.nordicbiosite.com

## Egypt

### SNF Medical

1 Libya St., 2nd Floor (Aboueloyoun lab), Shubra Elkhema, Cairo, Egypt  
 Phone: +20.2.44710999  
 Fax: +20.2.42203888  
 Email: snf.medical@rocketmail.com

## Estonia

### Nordic BioSite Oy

Eteläesplanadi 24 FIN-00130 Helsinki Finland  
 Phone: 0800.11.13.33  
 Fax: +46.(0)8.756.94.90  
 Email: info@nordicbiosite.com  
 Website: www.nordicbiosite.com

## Finland

### Immuno Diagnostic Oy

Kaivokatu 16, FI-13100 Hameenlinna Finland  
 Phone: +358.3.615.370  
 Fax: +358.3.6822.039  
 Email: info@immunodiagnostic.fi  
 Website: www.immunodiagnostic.fi

## Former Yugoslav Republic of Macedonia

### Bioland

25is Martiou str., 19018, Greece  
 Phone: +355.210.5559053  
 Fax: +355.210.555566  
 Email: info@bioland.com.gr  
 Website: www.bioland.com.gr

## France

### CliniSciences SAS

183 Avenue Georges Clemenceau 92000 Nanterre, France  
 Phone: +33.1.42.53.14.53  
 Fax: +33.1.46.56.97.33  
 Email: info@clinisciences.com  
 Website: www.clinisciences.com

## Georgia

### Novogen Diagnostik Ltd.

Altayçeşme Mah. Atatürk Cad. Engin Sk. Ümran Yayı No:3 Kat:3 D:17 34843 Maltepe / Istanbul Turkey  
 Phone: +90.0216.457.9333  
 Fax: +90.0216.457.9344  
 Email: info@novogen.com.tr  
 Website: www.novogen.com.tr

## Germany

### BioCat GmbH

Im Neuenheimer Feld 584, D-69120 Heidelberg, Germany  
 Phone: +49.6221.7141516  
 Fax: +49.6221.7141529  
 Email: info@biocat.com  
 Website: www.biocat.com

### BIOZOL Diagnostica Vertrieb GmbH

Obere Hauptstrasse 10b 85386 Eching, Germany  
 Phone: +49.89.37.99.666.6  
 Fax: +49.89.37.99.666.99  
 Email: r.baeuerle@biozol.de  
 Website: www.biozol.de

## Greece

### Bioland

25is Martiou str., 19018, Greece  
 Phone: +355.210.5559053  
 Fax: +355.210.555566  
 Email: info@bioland.com.gr  
 Website: www.bioland.com.gr

## India

### Immunoconcept India

F-242 Street No.7 Pandav Nagar, Mayur Vihar, Delhi-110091 Phase-1, India  
 Phone: +91.11.22753711  
 Fax: +91.11.22753710  
 Email: sales@immunoconceptindia.com  
 Website: www.immunoconceptindia.com

## Israel

### Y.A. Almog Diagnostic & Medical Equipment Ltd.

PO Box 349, Shoham 60850, Israel  
 Phone: +972.3.9773390  
 Fax: +972.3.9773391  
 Email: yaniv@almog.co.il  
 Website: www.almog.co.il

## Italy

### Histo-Line Laboratories

Via G. Di Vittorio 30, 20090 Pantigliate Milano, Italy  
 Phone: +39.2.55230061  
 Fax: +39.2.55213764  
 Email: support@histoline.com  
 Website: www.histoline.com

## Korea

### Essence Medical Inc.

417 Leaders B/D, Yatapdong 342-1 Bundang-gu, Seongnam, Gyeonggi-do, South Korea  
 Phone: +82.31.707.1544  
 Fax: +82.31.707.1999  
 Email: info@essencemedical.com  
 Website: www.essencemedical.com

## Latvia

### Nordic BioSite Oy

Eteläesplanadi 24 FIN-00130 Helsinki Finland  
 Phone: 0800.11.13.33  
 Fax: +46.(0)8.756.94.90  
 Email: info@nordicbiosite.com  
 Website: www.nordicbiosite.com

## Lithuania

### Nordic BioSite Oy

Eteläesplanadi 24 FIN-00130 Helsinki Finland  
 Phone: 0800.11.13.33  
 Fax: +46.(0)8.756.94.90  
 Email: info@nordicbiosite.com  
 Website: www.nordicbiosite.com

## Luxembourg

### Sanbio B.V.

Frontstraat 2c 5405 PB Uden The Netherlands  
 Phone: +31.413.251.115  
 Fax: +31(0)413.266.605  
 Email: sanbio@sanbio.nl  
 Website: www.sanbio.nl

**Malaysia****BSTM Group**

Revongen Corporation CenterNo 12A, Jalan TP5,  
Taman Perindustrian UEP, Subang Jaya, Selangor,  
Malaysia 47600

Phone: +60.3.8025.1603  
Fax: +60.3.8025.1637  
Email: sales@bstmgrou.com  
Website: www.bstmgrou.com

**Montenegro****Bioland**

25is Martiou str., 19018, Greece

Phone: +355.210.5559053  
Fax: +355.210.555566  
Email: info@bioland.com.gr  
Website: www.bioland.com.gr

**Morocco****CliniSciences SAS**

183 Avenue Georges Clemenceau  
92000 Nanterre, France

Phone: +33.1.42.53.14.53  
Fax: +33.1.46.56.97.33  
Email: info@clinisciences.com  
Website: www.clinisciences.com

**Netherlands****Sanbio B.V.**

Frontstraat 2c 5405 PB Uden The Netherlands

Phone: +31.413.251.115  
Fax: +31.413.266.605  
Email: sanbio@sanbio.nl  
Website: www.sanbio.nl

**Norway****Nordic BioSite**

P.b 1681 Vika (Arbins gate 2) N-0253 Oslo, Norway

Phone: 800.10.301  
Fax: +46.(0)8.756.94.90  
Email: info@nordicbiosite.com  
Website: www.nordicbiosite.com

**Pakistan****Bio Pharmax/Bio Site**

Room # 6, 2nd floor Al-Noor Centre, 63- Circular Road,  
Lahore, Pakistan

Phone: +92.42.37659730  
Fax: +92.42.37637838  
Email: bpharmax@wol.net.pk  
Email: aikchand@yahoo.com  
Website: www.biopharmaxpk.com

**Peru****Gery Representaciones E.I.R.L.**

Jr. Belisario Flores, 527 Lince Lima-14 Peru

Phone: +51.1.4713861  
Fax: +51.1.2651279  
Email: gery@infonegocio.com.pe  
Website: www.gery-representaciones.com

**Philippines****JMDiagnostika Co., Ltd.**

Block 40, Lot 4, Deca Homes, Brgy Cabantian, Davao  
City, 8000, Philippines

Phone: ++63.082.282.2806  
Fax: +63.922.482.5686  
Email: jmdiagnostika@gmail.com

**Poland****Gentaur Poland Sp. Z**

Ulica Ogama 15/19B m2 80-826 GDANSK, Poland

Phone: +48.058.710.33.44  
Fax: +48.058.710.33.48  
Email: poland@gentaur.com  
Website: www.gentaur.com

**Portugal****LabClinics S.A.**

C. Industria 54, E-08025 Barcelona, Spain

Phone: +34.93.446.47.00  
Fax: +34.93.348.10.39  
Email: logistic@labclinics.com  
Website: www.labclinics.com

**Republic of Azerbaijan****Novogen Diagnostik Ltd.**

Altayçeşme Mah. Atatürk Cad. Engin Sk. Ümran Yapı  
No:3 Kat:3 D:17 34843 Maltepe / Istanbul Turkey

Phone: +90.0216.457.9333  
Fax: +90.0216.457.9344  
Email: info@novogen.com.tr  
Website: www.novogen.com.tr

**Republic of Cyprus (Southern Cyprus)****Bioland**

25is Martiou str., 19018, Greece

Phone: +355.210.5559053  
Fax: +355.210.555566  
Email: info@bioland.com.gr  
Website: www.bioland.com.gr

**Singapore****BSTM Group**

Revongen Corporation CenterNo 12A, Jalan TP5,  
Taman Perindustrian UEP, Subang Jaya, Selangor,  
Malaysia 47600

Phone: +60.3.8025.1603  
Fax: +60.3.8025.1637  
Email: sales@bstmgrou.com  
Website: www.bstmgrou.com

**South Africa****Biocom**

265 Pretoriusstreet Lyttleton Manor Centurion, 0157  
South Africa

Phone: +27.12.644.2448/2795  
Fax: +27.86.654.9048  
Email: izak@biocombiotech.co.za  
Website: www.biocomdiagnostics.com

**Spain****LabClinics S.A.**

C. Industria 54, E-08025 Barcelona, Spain

Phone: +34.934464700  
Fax: +34.933481039  
Email: logistic@labclinics.com  
Website: www.labclinics.com/

**Sweden****Nordic BioSite**

Propellervagen 4A, 183 62 Taby, Sweden

Phone: +46.(0)8.544.433.40  
Fax: +46.(0)8.756.94.90  
Email: info@nordicbiosite.com  
Website: www.nordicbiosite.com

**Switzerland****BioCat GmbH**

Im Neuenheimer Feld 584, D-69120 Heidelberg, Germany

Phone: +49.(0)6221.7141516  
Fax: +49.(0)6221.7141529  
Email: info@biocat.com  
Website: www.biocat.com

**Taiwan****Bond Biotech, Inc. - Primary Antibodies (automation)**

No.7, Lane 1, Yishu S. St., Longjing Township,  
Taichung County 434, Taiwan, R.O.C

Phone: +886.4.2652.1202  
Fax: +886.4.2652.3797  
Email: bond.biotech@msa.hinet.net  
Website: www.bondbiotech.com.tw

**Everlight Biotech (Taiwan) Co. Ltd. - Primary Antibodies (manual), Detection Systems, Ancillary Reagents**

221, Floor 13, Number 25, Lane 169, Kang Ning  
Street, His Chih, Taipei, Taiwan. R.O.C.

Phone: +886.0800.251.010  
Fax: +886.02.2692.4255  
Email: sales@tweverlight.com.tw  
Website: www.tweverlight.com.tw

**Thailand****Medicare Supply Ltd., Part.**

60/348 M.5 Soi Senanikom 1 Phahonyothin Road  
Jorakebua, Ladprao District, Bangkok, 10230,  
Thailand

Phone: +662.553.6013  
Fax: +662.578.3496  
Email: medicaresupply@yahoo.com

**Tunisia****CliniSciences SAS**

183 Avenue Georges Clemenceau 92000 Nanterre, France

Phone: +33.1.42.53.14.53  
Fax: +33.1.46.56.97.33  
Email: info@clinisciences.com  
Website: www.clinisciences.com

**Turkey****Novogen Diagnostik Ltd.**

Altayçeşme Mah. Atatürk Cad. Engin Sk. Ümran Yapı  
No:3 Kat:3 D:17 34843 Maltepe / Istanbul Turkey

Phone: +90.0216.457.9333  
Fax: +90.0216.457.9344  
Email: info@novogen.com.tr  
Website: www.novogen.com.tr

**Turkish Republic of Northern Cyprus****Novogen Diagnostik Ltd.**

Altayçeşme Mah. Atatürk Cad. Engin Sk. Ümran Yapı  
No:3 Kat:3 D:17 34843 Maltepe / Istanbul Turkey

Phone: +90.0216.457.9333  
Fax: +90.0216.457.9344  
Email: info@novogen.com.tr  
Website: www.novogen.com.tr

**Vietnam****VNDAT Co., Ltd.**

No. 41, Lane 78, Ngoc Thuy Road, LONG Bien  
District, HaNoi, Vietnam

Phone: +84.37738992  
Fax: +84.37738991  
Email: sales@vndat.com.vn  
Website: www.vndat.com.vn

## Product List by Name

A/B Block (Avidin/Biotin Blocking Solution)	25	Chromogranin A	11	Galectin-3	15	Pepsin Solution	25
Actin (Muscle)	6	Chromosome 17 Centromere Digoxigenin Labeled Probe	3	GFAP	15	Peroxidase Blocking Solution	25
Actin (Smooth Muscle)	6	Chromosome 17 Centromere Green FISH Probe	4	GVA Aqueous Mounting Solution	25	PLAP	20
Acu-Stain™ AP Kit Mouse + Rabbit	24	Chromosome 3 Centromere Digoxigenin Labeled Probe	3	HER2 (c-erbB-2)	15	Power-Stain™ 1.0 Double Stain Kit I (Poly HRP for Mouse + Poly AP for Rabbit)	23
Acu-Stain™ HRP Kit Mouse + Rabbit	24	Chromosome 3 Centromere Green FISH Probe	4	HER2 CISH Kit	2	Power-Stain™ 1.0 Double Stain Kit II (Poly AP for Mouse + Poly HRP for Rabbit)	23
AEC Substrate (Single Solution)	25	Chromosome 7 Centromere Digoxigenin Labeled Probe	3	HER2 Digoxigenin Labeled Probe	3	Power-Stain™ 1.0 Poly AP Kit for Mouse + Rabbit	24
AEC Substrate Kit (Three Solutions) (20X)	25	Chromosome 7 Centromere Green FISH Probe	4	HER2 Red and Chromosome 17 Centromere Green FISH Probe Cocktail	4	Power-Stain™ 1.0 Poly HRP AEC Kit for Mouse + Rabbit	24
AFP	6	CISH Cell Pretreatment Kit	5	HRP Conjugate Diluent	25	Power-Stain™ 1.0 Poly HRP DAB Kit for Mouse + Rabbit	24
AMACR	6	CISH Poly HRP Detection Kit for DIG Labeled Probes	5	HRP Streptavidin Conjugate	25	Power-Stain™ 2.0 Poly HRP Kit for Mouse + Rabbit	24
Androgen Receptor	6	CISH Tissue Pretreatment Kit	5	Human Chorionic Gonadotropin (hCG)	15	PR	20
Antibody Diluent for Automated Stainers	25	Citrate Buffer pH 6 (10X)	25	Human Kappa Light Chain	15	Primary Antibody Diluent	25
AP Streptavidin Conjugate	25	Citrate Buffer, pH 6 (1X)	25	Human Lambda Light Chain	16	Proteinase K	25
BCIP/NBT Substrate Kit	25	Citrate Buffer, pH 6 (20X)	25	Inhibin Alpha	16	PSA, Polyclonal	20
Bcl-2	7	CleanMount™ Aqueous Mounting Solution	25	Insulin	16	PSA, Clone 140	21
Biotin Goat anti-Mouse IgG+ IgM (H+L)	25	Cyclin D1	11	Ki-67	16	P sAP	21
Biotin Goat anti-Rabbit IgG (H+L)	25	Cytokeratin	12	Laminin	17	PTEN	21
Blocking Solution	25	Cytokeratin, Clone AE1/AE3	12	LCA (CD45)	17	S-100	21
C-Block (Casein Blocking Solution)	25	Cytokeratin 18	12	Liquid Fast Red Substrate Kit	25	Sensitive DAB Substrate Kit	25
c-Kit (CD117)	11	Cytokeratin 19	12	Lysozyme (Muramidase)	17	SSC Buffer (20X)	5
Calponin	7	Cytokeratin 20	13	Mayer's Hematoxylin	25	Super PAP Pen	25
Calretinin	7	Cytokeratin 5/6	13	Melan-A	17	Synaptophysin	21
CD10	7	Cytokeratin 7	13	Melanosome	17	TBST (Tris Buffered Saline and 0.05% Tween 20), pH 7.4 (20X)	25
CD138	7	Cytokeratin HMW	13	Mesothelial Cell	18	TdT	21
CD15	8	D2-40	13	Mini PAP Pen	25	TERC Red and Chromosome 3 Centromere Green Probe Cocktail	4
CD19	8	DAB Substrate Kit	25	MLH1	18	TERC Red FISH Probe	4
CD20 B Cell	8	Desmin	13	MSH2	18	Thyroglobulin	22
CD3	8	E-Cadherin	14	MSH6	18	TMB Single Substrate Solution for ELISA	25
CD30	8	EBER Digoxigenin Labeled Probe	3	MUM-1	18	Tris Buffer, pH 9 (1X)	25
CD31 (PECAM-1)	9	EGFR	14	MyoD1	18	Tris Buffer, pH 9 (20X)	25
CD34	9	EMA	14	Myogenin	19	Tris EDTA Buffer, pH 9 (1X)	25
CD4	9	Epithelial Antigen (Ep-Cam)	14	Myoglobin	19	Tris EDTA Buffer, pH 9 (20X)	25
CD45 (LCA)	9	ER	14	Neurofilaments (Pan)	19	Trypsin Concentrate and Diluent	25
CD45RO	9	Ficin Solution	25	Non-Immune Mouse Immunoglobulin	19	TTF-1	22
CD5	9	FITC Goat anti-Human IgG (H+L)	25	Non-Immune Rabbit Immunoglobulin	19	Tween 20 (50%)	25
CD56 (SCLC)	10	FITC Goat anti-Human IgG+A+M (H+L)	25	NSE	19	Vimentin	22
CD57	10	FITC Goat anti-Human IgM (µ chain specific)	25	p53	20	Von Willebrand Factor (Factor VIII RA)	22
CD68	10	FITC Goat anti-Rabbit IgG (H+L)	25	p63	20	WT1	22
CD79a	10	FITC Streptavidin	25	PBS and 0.05% Tween 20, pH 7.4 (1X)	25		
CD8	10			PBS Powder (1L of 10X per pouch)	25		
CDX2	10			PCNA	20		
CEA	11						

### Ordering Information

By Phone: Please call toll free (877) GENEMED (436-3633), or (650) 952-0110 Mon. through Fri. from 8:30AM to 5:00PM Pacific Standard Time

By Fax: (650) 952-1060

By Website: [www.genemed.com](http://www.genemed.com)

By Email: [order@genemed.com](mailto:order@genemed.com)

Ordering can be placed via website, telephone, fax, or e-mail. Please provide the following information:

Purchaser name :	Telephone number :
End user's name :	Telephone number :
Shipping address :	
Billing address :	
Purchase order number or credit card number :	
Genemed catalog number and product description :	
Product quantity desired :	

### Support Information

By Phone: Please call toll free (877) GENEMED (436-3633), or (650) 952-0110 Mon. through Fri. from 8:30AM to 5:00PM Pacific Standard Time

By Website: <http://www.genemed.com>

By Email: [support@genemed.com](mailto:support@genemed.com)

### Fast Delivery

Orders are normally shipped within 24 hours from the time of the order receipt. Orders placed before 1PM PST are normally shipped the same day. All orders are shipped by Federal Express overnight service unless otherwise requested. Shipping instructions of our customers are followed according to the original Purchase Order. Shipping charges are prepaid F.O.B South San Francisco, CA and are added to the invoice.

### Terms

We accept payments by check, major credit cards, and purchase orders from approved customers. Terms of payment are net thirty (30) days from the date of shipment on approved credit. A 1.5% service charge per month is added for accounts of over 30 days.

### Returns

Please call customer service before returning any products for refund credit or replacement. No return will be accepted without authorization. There is a restocking charge of 20% for unopened, properly stored items that are returned.

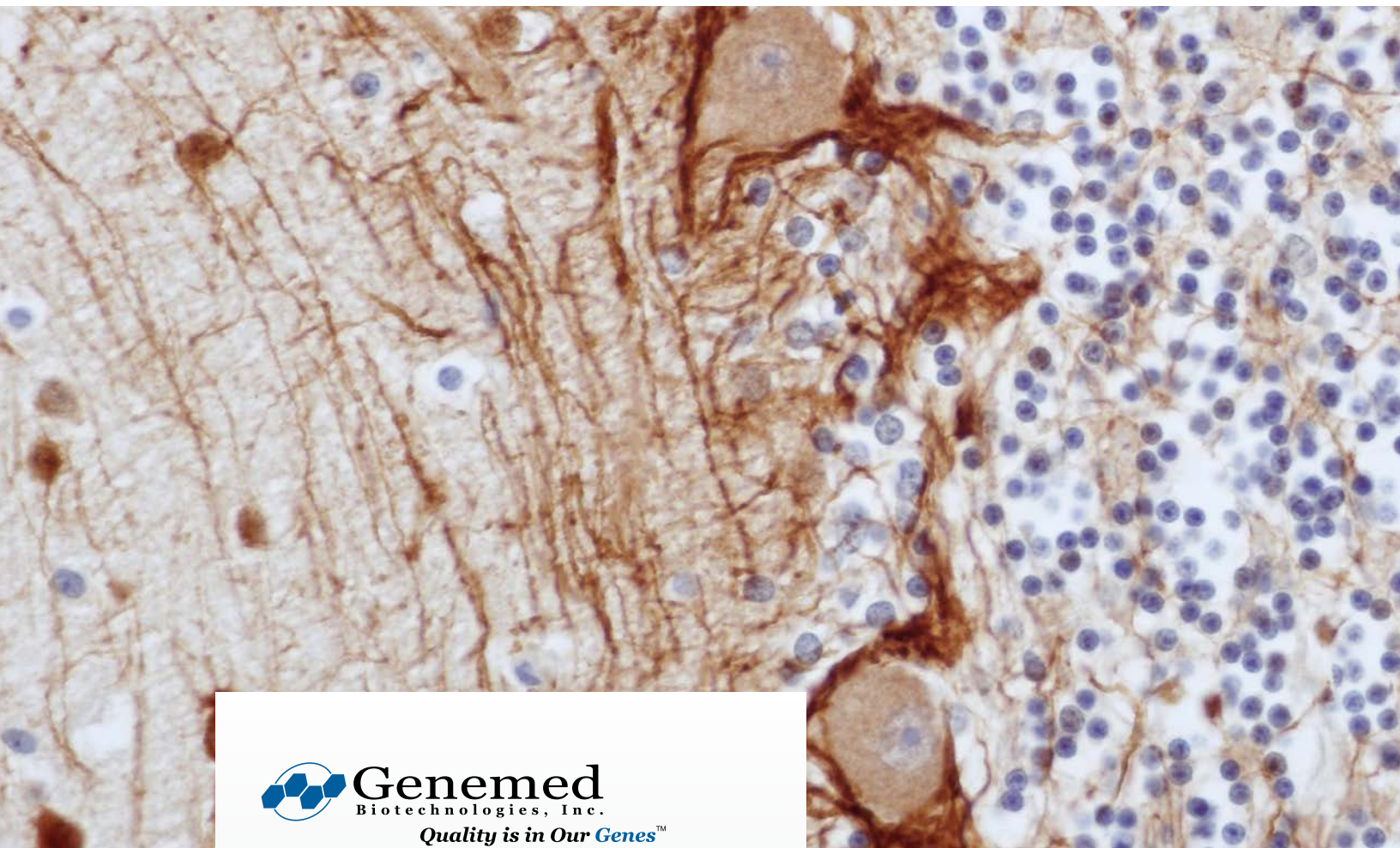
### Conditions

1. Nothing disclosed in this catalog is to be construed as a recommendation to use our products in violation of any patents. Genemed cannot be held responsible for patent infringements or other violations that occur with use of Genemed products.
2. Genemed IHC products are intended for in-vitro diagnostic use and research use only. Research use only products should not be administered to humans or used for in-vitro diagnostic purposes. Some products are classified as analyte specific reagents, in which no performance claims are made about those products.
3. We reserve the right to change prices or alter packaging at any time without prior notification.

### Warranties

Genemed guarantees that the performance of our products meets our stated claims. No guarantee of performance is made for novel or unknown applications of our products. We will replace, free of charge, any products that does not meet Genemed stated claims. Genemed makes no warranties as to the suitability of the product for a user's specific application. The suitability of the product must be determined by the end user.

Genemed Biotechnologies, Inc.  
458 Carlton Court  
South San Francisco, CA 94080 USA



458 Carlton Court, South San Francisco, CA 94080 USA

Phone: 650-952-0110

Toll-Free: 877-436-3633 or 877-GENEMED

Fax: 650-952-1060

Orders: [order@genemed.com](mailto:order@genemed.com)

Support: [support@genemed.com](mailto:support@genemed.com)

[www.genemed.com](http://www.genemed.com)

© 2013 Genemed Biotechnologies, Inc. All Rights Reserved